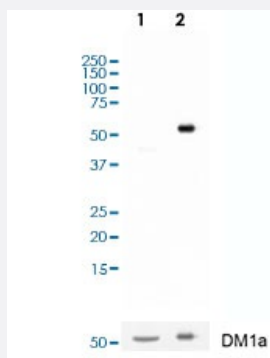


RecomAb™

Delta2 alpha Tubulin monoclonal antibody, clone RM447

Catalog # MAB23232 Size 100 uL

Applications



Western Blot

Western blot analysis of Lane 1:HeLa cell lysates , Lane 2:purified cow brain tubulin with Delta2 alpha Tubulin monoclonal antibody, clone RM447 (Cat # MAB23232) at a 1:1000 dilution.

Specification

Product Description	Rabbit recombinant monoclonal antibody raised against delta 2 alpha-tubulin.
Antibody Species	Rabbit
Immunogen	Original antibody is raised against a synthetic peptide corresponding to delta 2 alpha-tubulin.
Reactivity	Human
Specificity	This antibody reacts to Delta2 alpha Tubulin a C-terminally trimmed version of alpha-tubulin lacks a c arboxy-terminal glutamyl-tyrosine group.
Form	Liquid
Purification	Protein A purification
Isotype	IgG
Recommend Usage	Immunocytochemistry (1:100-1:200) Western Blot (1:1000-1:2000) The optimal working dilution should be determined by the end user.

Storage Buffer	In PBS (50% glycerol, 1% BSA, 0.09% sodium azide)
Storage Instruction	Store at -20°C. Aliquot to avoid repeated freezing and thawing.
Note	This product contains sodium azide: a POISONOUS AND HAZARDOUS SUBSTANCE which should be handled by trained staff only.

Applications

- Western Blot

Western blot analysis of Lane 1:HeLa cell lysates , Lane 2:purified cow brain tubulin with Delta2 alpha Tubulin monoclonal antibody, clone RM447 (Cat # MAB23232) at a 1:1000 dilution.