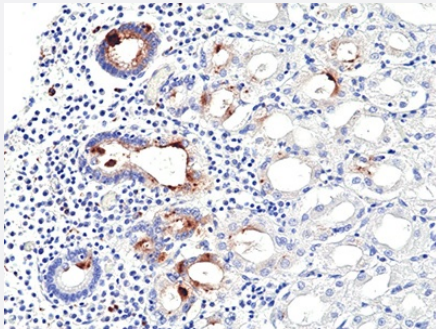


RecomAb™

Helicobacter pylori monoclonal antibody, clone RM429

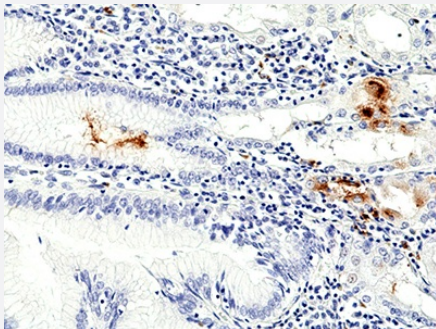
Catalog # MAB23215 Size 100 uL

Applications



Immunohistochemistry (Formalin/PFA-fixed paraffin-embedded sections)

Immunohistochemical staining of formalin fixed and paraffin embedded human stomach using *Helicobacter pylori* monoclonal antibody clone RM429 at a 1:100 dilution.



Immunohistochemistry (Formalin/PFA-fixed paraffin-embedded sections)

Immunohistochemical staining of formalin fixed and paraffin embedded human stomach using *Helicobacter pylori* monoclonal antibody clone RM429 at a 1:100 dilution.

Specification

Product Description	Rabbit recombinant monoclonal antibody raised against <i>Helicobacter pylori</i> .
Antibody Species	Rabbit
Immunogen	Original antibody is raised against proteins from <i>Helicobacter pylori</i> .
Reactivity	<i>Helicobacter pylori</i>
Specificity	This antibody reacts to <i>Helicobacter pylori</i> .
Form	Liquid

Purification	Protein A purification
Isotype	IgG
Recommend Usage	Immunochemistry (1:100 - 1:200) The optimal working dilution should be determined by the end user.
Storage Buffer	In PBS (50% glycerol, 1% BSA, 0.09% sodium azide)
Storage Instruction	Store at -20°C. Aliquot to avoid repeated freezing and thawing.
Note	This product contains sodium azide: a POISONOUS AND HAZARDOUS SUBSTANCE which should be handled by trained staff only.

Applications

- Immunohistochemistry (Formalin/PFA-fixed paraffin-embedded sections)

Immunohistochemical staining of formalin fixed and paraffin embedded human stomach using *Helicobacter pylori* monoclonal antibody clone RM429 at a 1:100 dilution.

- Immunohistochemistry (Formalin/PFA-fixed paraffin-embedded sections)

Immunohistochemical staining of formalin fixed and paraffin embedded human stomach using *Helicobacter pylori* monoclonal antibody clone RM429 at a 1:100 dilution.