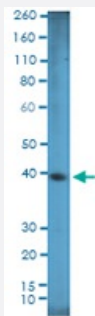


RecomAb™

# SOX2 monoclonal antibody, clone RM427

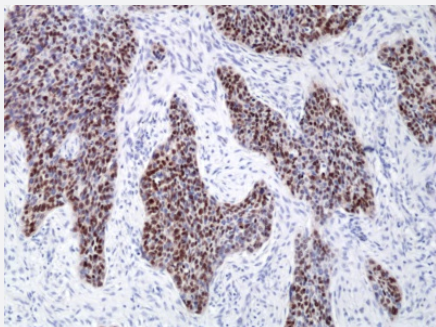
Catalog # MAB23214      Size 100 uL

## Applications



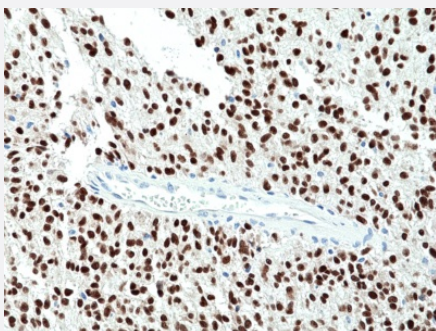
### Western Blot (Cell lysate)

Western Blot of 293 cell lysate using SOX2 monoclonal antibody clone RM427 at a 1:1000 dilution.



### Immunohistochemistry (Formalin/PFA-fixed paraffin-embedded sections)

Immunohistochemical staining of formalin fixed and paraffin embedded human lung squamous Cell Carcinoma tissue section using SOX2 monoclonal antibody clone RM427 at a 1:100 dilution.



### Immunohistochemistry (Formalin/PFA-fixed paraffin-embedded sections)

Immunohistochemical staining of formalin fixed and paraffin embedded human glioblastoma tissue section using SOX2 monoclonal antibody clone RM427 at a 1:100 dilution.

## Specification

### Product Description

Rabbit recombinant monoclonal antibody raised against human SOX2.

Antibody Species	Rabbit
Immunogen	Original antibody is raised against a synthetic peptide corresponding to the C-terminus of human SOX2.
Reactivity	Human
Specificity	This antibody reacts to human SOX2.
Form	Liquid
Purification	Protein A purification
Isotype	IgG
Recommend Usage	Immunocytochemistry (1:100 - 1:250) Western Blot (1:100 - 1:2000) The optimal working dilution should be determined by the end user.
Storage Buffer	In PBS (50% glycerol, 1% BSA, 0.09% sodium azide)
Storage Instruction	Store at -20°C. Aliquot to avoid repeated freezing and thawing.
Note	This product contains sodium azide: a POISONOUS AND HAZARDOUS SUBSTANCE which should be handled by trained staff only.

## Applications

- Western Blot (Cell lysate)

Western Blot of 293 cell lysate using SOX2 monoclonal antibody clone RM427 at a 1:1000 dilution.

- Immunohistochemistry (Formalin/PFA-fixed paraffin-embedded sections)

Immunohistochemical staining of formalin fixed and paraffin embedded human lung squamous Cell Carcinoma tissue section using SOX2 monoclonal antibody clone RM427 at a 1:100 dilution.

- Immunohistochemistry (Formalin/PFA-fixed paraffin-embedded sections)

Immunohistochemical staining of formalin fixed and paraffin embedded human glioblastoma tissue section using SOX2 monoclonal antibody clone RM427 at a 1:100 dilution.

## Gene Info — SOX2

Entrez GeneID [6657](#)

Gene Name SOX2

Gene Alias	ANOP3, MCOPS3, MGC2413
Gene Description	SRY (sex determining region Y)-box 2
Omim ID	<a href="#">184429</a> <a href="#">206900</a>
Gene Ontology	<a href="#">Hyperlink</a>
Gene Summary	<p>This intronless gene encodes a member of the SRY-related HMG-box (SOX) family of transcription factors involved in the regulation of embryonic development and in the determination of cell fate. The product of this gene is required for stem-cell maintenance in the central nervous system, and also regulates gene expression in the stomach. Mutations in this gene have been associated with optic nerve hypoplasia and with syndromic microphthalmia, a severe form of structural eye malformation. This gene lies within an intron of another gene called SOX2 overlapping transcript (SOX2 OT). [provided by RefSeq</p>
Other Designations	SRY-related HMG-box gene 2 sex-determining region Y-box 2 transcription factor SOX2

## Disease

- [Anophthalmos](#)
- [Coloboma](#)
- [Diabetes Mellitus](#)
- [Diabetic Nephropathies](#)
- [Genetic Predisposition to Disease](#)
- [Kidney Failure](#)
- [Microphthalmos](#)
- [Myopia](#)