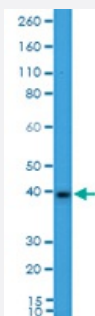


RecomAb™

## MSI2 monoclonal antibody, clone RM422

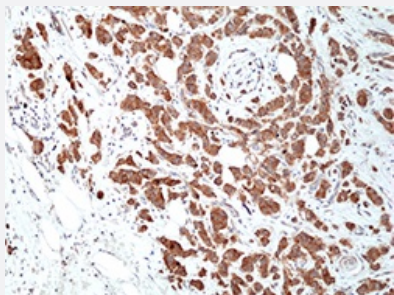
Catalog # MAB23209      Size 100 uL

### Applications



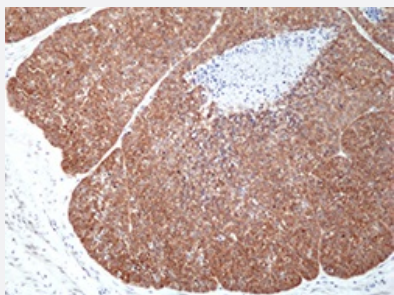
#### Western Blot (Cell lysate)

Western Blot of mouse brain tissue lysate using MSI2 monoclonal antibody clone RM422 at a 1:2000 dilution.



#### Immunohistochemistry (Formalin/PFA-fixed paraffin-embedded sections)

Immunohistochemical staining of formalin fixed and paraffin embedded human breast ductal carcinoma tissue section using MSI2 monoclonal antibody clone RM422 at a 1:400 dilution.



#### Immunohistochemistry (Formalin/PFA-fixed paraffin-embedded sections)

Immunohistochemical staining of formalin fixed and paraffin embedded human esophageal squamous carcinoma tissue section using MSI2 monoclonal antibody clone RM422 at a 1:100 dilution.

### Specification

#### Product Description

Rabbit recombinant monoclonal antibody raised against human MSI2.

Antibody Species	Rabbit
Immunogen	Original antibody is raised against a synthetic peptide corresponding to the internal region of human MSI2.
Reactivity	Human
Specificity	This antibody reacts to human MSI2. This antibody may also react to mouse or rat Msi2, as predicted by immunogen homology.
Form	Liquid
Purification	Protein A purification
Isotype	IgG
Recommend Usage	Immunocytochemistry (1:100 - 1:200) Western Blot (1:100 - 1:2000) The optimal working dilution should be determined by the end user.
Storage Buffer	In PBS (50% glycerol, 1% BSA, 0.09% sodium azide)
Storage Instruction	Store at -20°C. Aliquot to avoid repeated freezing and thawing.
Note	This product contains sodium azide: a POISONOUS AND HAZARDOUS SUBSTANCE which should be handled by trained staff only.

## Applications

- Western Blot (Cell lysate)

Western Blot of mouse brain tissue lysate using MSI2 monoclonal antibody clone RM422 at a 1:2000 dilution.

- Immunohistochemistry (Formalin/PFA-fixed paraffin-embedded sections)

Immunohistochemical staining of formalin fixed and paraffin embedded human breast ductal carcinoma tissue section using MSI2 monoclonal antibody clone RM422 at a 1:400 dilution.

- Immunohistochemistry (Formalin/PFA-fixed paraffin-embedded sections)

Immunohistochemical staining of formalin fixed and paraffin embedded human esophageal squamous carcinoma tissue section using MSI2 monoclonal antibody clone RM422 at a 1:100 dilution.

## Gene Info — MSI2

Entrez GeneID [124540](#)

Gene Name	MSI2
Gene Alias	FLJ36569, MGC3245, MSI2H
Gene Description	musashi homolog 2 (Drosophila)
Omim ID	<a href="#">607897</a>
Gene Ontology	<a href="#">Hyperlink</a>
Gene Summary	This gene encodes a protein containing two conserved tandem RNA recognition motifs. Similar proteins in other species function as RNA-binding proteins and play central roles in posttranscriptional gene regulation. Two transcript variants encoding distinct isoforms have been identified for this gene. [provided by RefSeq]
Other Designations	musashi 2

## Disease

- [Cardiovascular Diseases](#)
- [Diabetes Mellitus](#)
- [Edema](#)
- [Tobacco Use Disorder](#)