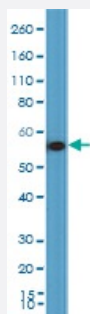


RecomAb™

KRT7 monoclonal antibody, clone RM416

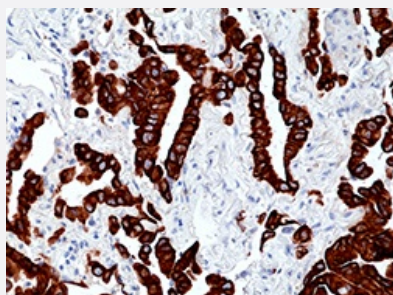
Catalog # MAB23206 Size 100 uL

Applications



Western Blot (Cell lysate)

Western Blot of HeLa cell lysate using KRT7 monoclonal antibody clone RM416 at a 1:10000 dilution.



Immunohistochemistry (Formalin/PFA-fixed paraffin-embedded sections)

Immunohistochemical staining of formalin fixed and paraffin embedded human lung adenocarcinoma tissue section using KRT7 monoclonal antibody clone RM416 at a 1:100 dilution.

Specification

| | |
|---------------------|--|
| Product Description | Rabbit recombinant monoclonal antibody raised against human KRT7. |
| Antibody Species | Rabbit |
| Immunogen | Original antibody is raised against a synthetic peptide corresponding to the C-terminus of human KRT7. |
| Reactivity | Human |
| Specificity | This antibody reacts to human KRT7. |
| Form | Liquid |

| | |
|----------------------------|--|
| Purification | Protein A purification |
| Isotype | IgG |
| Recommend Usage | Immunocytochemistry (1:100 - 1:200) Western Blot (1:1000 - 1:10000) The optimal working dilution should be determined by the end user. |
| Storage Buffer | In PBS (50% glycerol, 1% BSA, 0.09% sodium azide) |
| Storage Instruction | Store at -20°C. Aliquot to avoid repeated freezing and thawing. |
| Note | This product contains sodium azide: a POISONOUS AND HAZARDOUS SUBSTANCE which should be handled by trained staff only. |

Applications

- Western Blot (Cell lysate)

Western Blot of HeLa cell lysate using KRT7 monoclonal antibody clone RM416 at a 1:10000 dilution.

- Immunohistochemistry (Formalin/PFA-fixed paraffin-embedded sections)

Immunohistochemical staining of formalin fixed and paraffin embedded human lung adenocarcinoma tissue section using KRT7 monoclonal antibody clone RM416 at a 1:100 dilution.

Gene Info — KRT7

| | |
|-------------------------|---|
| Entrez GeneID | 3855 |
| Gene Name | KRT7 |
| Gene Alias | CK7, K2C7, K7, MGC129731, MGC3625, SCL |
| Gene Description | keratin 7 |
| Omim ID | 148059 |
| Gene Ontology | Hyperlink |
| Gene Summary | The protein encoded by this gene is a member of the keratin gene family. The type II cytokeratins consist of basic or neutral proteins which are arranged in pairs of heterotypic keratin chains coexpressed during differentiation of simple and stratified epithelial tissues. This type II cytokeratin is specifically expressed in the simple epithelia lining the cavities of the internal organs and in the gland ducts and blood vessels. The genes encoding the type II cytokeratins are clustered in a region of chromosome 12q12-q13. Alternative splicing may result in several transcript variants; however, not all variants have been fully described. [provided by RefSeq] |

Other Designations

cytokeratin 7|keratin, 55K type II cytoskeletal|keratin, simple epithelial type I, K7|keratin, type II cytoskeletal 7|sarcolectin|type II mesothelial keratin K7
