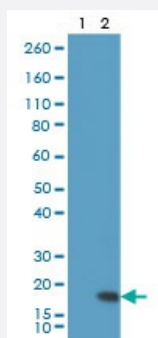


RecomAb™

# Histone H3 (trimethyl K9) monoclonal antibody, clone RM389

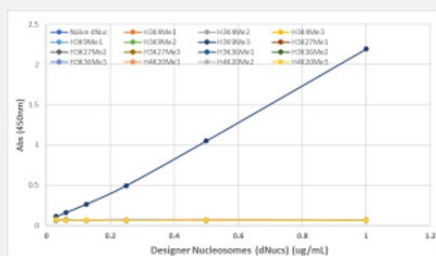
Catalog # MAB23170      Size 100 ug

## Applications



### Western Blot

Western blot analysis of Lane 1: recombinant Histone H3.3, Lane 2: acid extracts of HeLa cells with Histone H3 (trimethyl K9) monoclonal antibody, clone RM389 (Cat # MAB23170) under 0.5 ug/mL working concentration. showed a band of Histone H3 trimethylated at Lysine 9 (K9me3) in HeLa cells.



### Enzyme-linked Immunoabsorbent Assay

ELISA analysis of Designer Nucleosomes (dNucs) (Recombinant Human Nucleosome with H3 K4, 9, 27, 36 and H4 K20 Mono-, Di-, and Tri-Methylation), Histone H3 (trimethyl K9) monoclonal antibody, clone RM389 (Cat # MAB23170) (0.5 ug/mL).

## Specification

<b>Product Description</b>	Rabbit recombinant monoclonal antibody raised against human histone H3.
<b>Antibody Species</b>	Rabbit
<b>Immunogen</b>	Original antibody is raised against a synthetic trimethyl peptide corresponding to residues surrounding Lys9 of human histone H3.
<b>Reactivity</b>	Human
<b>Specificity</b>	This antibody reacts to Histone H3 trimethylated at Lysine 9. No cross reactivity with monomethylated Lysine 9, dimethylated Lysine 9, or other methylations in histone H3.

<b>Form</b>	Liquid
<b>Purification</b>	Protein A purification
<b>Isotype</b>	IgG
<b>Recommend Usage</b>	ELISA (1 ug/mL-10 ug/mL) Multiplex (0.5 ug/mL-2 ug/mL) Western Blot (0.5 ug/mL-2 ug/mL) The optimal working dilution should be determined by the end user.
<b>Storage Buffer</b>	In PBS (50% glycerol, 1% BSA, 0.09% sodium azide)
<b>Storage Instruction</b>	Store at -20°C. Aliquot to avoid repeated freezing and thawing.
<b>Note</b>	This product contains sodium azide: a POISONOUS AND HAZARDOUS SUBSTANCE which should be handled by trained staff only.

## Applications

- Western Blot

Western blot analysis of Lane 1: recombinant Histone H3.3, Lane 2: acid extracts of HeLa cells with Histone H3 (trimethyl K9) monoclonal antibody, clone RM389 (Cat # MAB23170) under 0.5 ug/mL working concentration. showed a band of Histone H3 trimethylated at Lysine 9 (K9me3) in HeLa cells.

- Enzyme-linked Immunoabsorbent Assay

ELISA analysis of Designer Nucleosomes (dNucs) (Recombinant Human Nucleosome with H3 K4, 9, 27, 36 and H4 K20 Mono-, Di-, and Tri-Methylation), Histone H3 (trimethyl K9) monoclonal antibody, clone RM389 (Cat # MAB23170) (0.5 ug/mL).