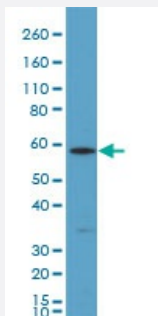


RecomAb™

KRT10 monoclonal antibody, clone RM386

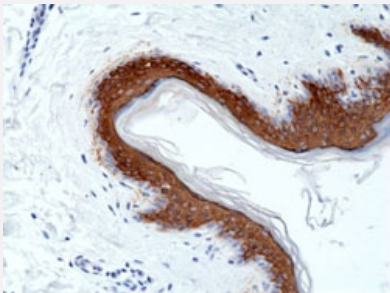
Catalog # MAB23168 Size 100 uL

Applications



Western Blot (Cell lysate)

Western blot analysis of A-431 cell lysates with KRT10 monoclonal antibody, clone RM386 (Cat # MAB23168) at a 1:200 dilution.



Immunohistochemistry (Formalin/PFA-fixed paraffin-embedded sections)

Immunohistochemical staining (Formalin-fixed paraffin-embedded sections) of human skin with KRT10 monoclonal antibody, clone RM386 (Cat # MAB23168) at a 1:1000 dilution.

Specification

Product Description	Rabbit recombinant monoclonal antibody raised against human KRT10.
Antibody Species	Rabbit
Immunogen	Original antibody is raised against a synthetic peptide corresponding to C-terminus of human KRT10.
Reactivity	Human
Specificity	This antibody reacts to human KRT10.
Form	Liquid

Purification	Protein A purification
Isotype	IgG
Recommend Usage	Immunohistochemistry (1:500-1:1000) Western Blot (1:200-1:1000) The optimal working dilution should be determined by the end user.
Storage Buffer	In PBS (50% glycerol, 1% BSA, 0.09% sodium azide)
Storage Instruction	Store at -20°C. Aliquot to avoid repeated freezing and thawing.
Note	This product contains sodium azide: a POISONOUS AND HAZARDOUS SUBSTANCE which should be handled by trained staff only.

Applications

- Western Blot (Cell lysate)

Western blot analysis of A-431 cell lysates with KRT10 monoclonal antibody, clone RM386 (Cat # MAB23168) at a 1:200 dilution.

- Immunohistochemistry (Formalin/PFA-fixed paraffin-embedded sections)

Immunohistochemical staining (Formalin-fixed paraffin-embedded sections) of human skin with KRT10 monoclonal antibody, clone RM386 (Cat # MAB23168) at a 1:1000 dilution.

Gene Info — KRT10

Entrez GeneID	3858
Gene Name	KRT10
Gene Alias	CK10, K10, KPP
Gene Description	keratin 10
Omim ID	113800 148080 600648 607602
Gene Ontology	Hyperlink
Gene Summary	This gene encodes a member of the type I (acidic) cytokeratin family, which belongs to the superfamily of intermediate filament (IF) proteins. Keratins are heteropolymeric structural proteins which form the intermediate filament. These filaments, along with actin microfilaments and microtubules, compose the cytoskeleton of epithelial cells. Mutations in this gene are associated with epidermolytic hyperkeratosis. This gene is located within a cluster of keratin family members on chromosome 17q21. [provided by RefSeq]

Other Designationscytokeratin 10
