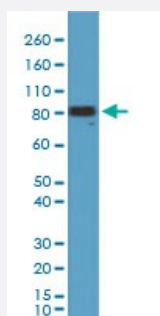


RecomAb™

# CHGA monoclonal antibody, clone RM385

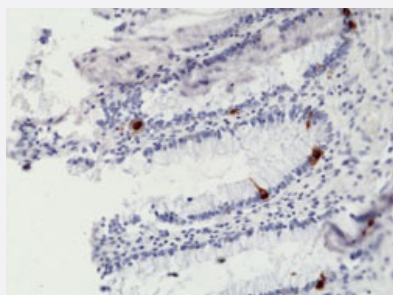
Catalog # MAB23167      Size 100 uL

## Applications



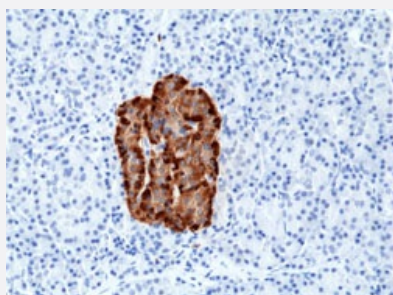
### Western Blot (Tissue lysate)

Western Blot (Tissue lysate) analysis of mouse spleen tissue lysates with CHGA monoclonal antibody, clone RM385 (Cat # MAB23167) at a 1:1000 dilution.



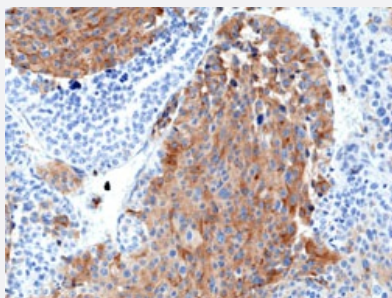
### Immunohistochemistry (Formalin/PFA-fixed paraffin-embedded sections)

Immunohistochemical staining (Formalin-fixed paraffin-embedded sections) of human colon with CHGA monoclonal antibody, clone RM385 (Cat # MAB23167) at a 1:10000 dilution.



### Immunohistochemistry (Formalin/PFA-fixed paraffin-embedded sections)

Immunohistochemical staining (Formalin-fixed paraffin-embedded sections) of human pancreas with CHGA monoclonal antibody, clone RM385 (Cat # MAB23167) at a 1:2500 dilution.



## Immunohistochemistry (Formalin/PFA-fixed paraffin-embedded sections)

Immunohistochemical staining (Formalin-fixed paraffin-embedded sections) of medullary thyroid carcinoma with CHGA monoclonal antibody, clone RM385 (Cat # MAB23167) at a 1:2500 dilution.

## Specification

<b>Product Description</b>	Rabbit recombinant monoclonal antibody raised against human CHGA.
<b>Antibody Species</b>	Rabbit
<b>Immunogen</b>	Original antibody is raised against a synthetic peptide corresponding to N-terminus of human CHGA.
<b>Specificity</b>	This antibody reacts to CHGA.
<b>Form</b>	Liquid
<b>Purification</b>	Protein A purification
<b>Isotype</b>	IgG
<b>Recommend Usage</b>	Immunohistochemistry (1:5000-1:10000) Western Blot (1:1000-1:2000) The optimal working dilution should be determined by the end user.
<b>Storage Buffer</b>	In PBS (50% glycerol, 1% BSA, 0.09% sodium azide)
<b>Storage Instruction</b>	Store at -20°C. Aliquot to avoid repeated freezing and thawing.
<b>Note</b>	This product contains sodium azide: a POISONOUS AND HAZARDOUS SUBSTANCE which should be handled by trained staff only.

## Applications

### ● Western Blot (Tissue lysate)

Western Blot (Tissue lysate) analysis of mouse spleen tissue lysates with CHGA monoclonal antibody, clone RM385 (Cat # MAB23167) at a 1:1000 dilution.

- Immunohistochemistry (Formalin/PFA-fixed paraffin-embedded sections)

Immunohistochemical staining (Formalin-fixed paraffin-embedded sections) of human colon with CHGA monoclonal antibody, clone RM385 (Cat # MAB23167) at a 1:10000 dilution.

- Immunohistochemistry (Formalin/PFA-fixed paraffin-embedded sections)

Immunohistochemical staining (Formalin-fixed paraffin-embedded sections) of human pancreas with CHGA monoclonal antibody, clone RM385 (Cat # MAB23167) at a 1:2500 dilution.

- Immunohistochemistry (Formalin/PFA-fixed paraffin-embedded sections)

Immunohistochemical staining (Formalin-fixed paraffin-embedded sections) of medullary thyroid carcinoma with CHGA monoclonal antibody, clone RM385 (Cat # MAB23167) at a 1:2500 dilution.

## Gene Info — CHGA

**Entrez GeneID** [1113](#)

**Gene Name** CHGA

**Gene Alias** CGA

**Gene Description** chromogranin A (parathyroid secretory protein 1)

**Omim ID** [118910](#)

**Gene Ontology** [Hyperlink](#)

**Gene Summary** The protein encoded by this gene is a member of the chromogranin/secretogranin family of neuro endocrine secretory proteins. It is found in secretory vesicles of neurons and endocrine cells. This gene product is a precursor to three biologically active peptides; vasostatin, pancreastatin, and parastatin. These peptides act as autocrine or paracrine negative modulators of the neuroendocrine system. Other peptides, including chromostatin, beta-granin, WE-14 and GE-25, are also derived from the full-length protein. However, biological activities for these molecules have not been shown. [provided by RefSeq]

**Other Designations** betagranin (N-terminal fragment of chromogranin A)|chromogranin A|parathyroid secretory protein 1

## Disease

- [Genetic Predisposition to Disease](#)

- [Glomerulonephritis](#)

- [Hypertension](#)

- [Kidney Failure](#)
- [Prostatic Neoplasms](#)
- [Schizophrenia](#)