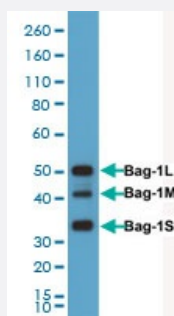


RecomAb™

# BAG-1 monoclonal antibody, clone RM356

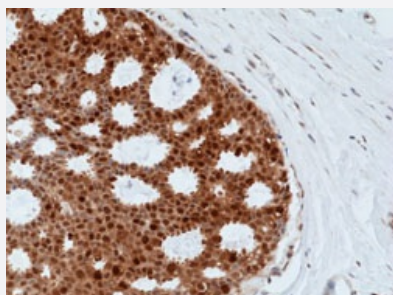
Catalog # MAB23159      Size 100 uL

## Applications



### Western Blot (Cell lysate)

Western blot analysis of HeLa cell lysates with BAG-1 monoclonal antibody, clone RM356 (Cat # MAB23159) at a 1:1000 dilution.



### Immunohistochemistry (Formalin/PFA-fixed paraffin-embedded sections)

Immunohistochemical staining (Formalin-fixed paraffin-embedded sections) of human breast cancer with BAG-1 monoclonal antibody, clone RM356 (Cat # MAB23159) at a 1:500 dilution.

## Specification

Product Description	Rabbit recombinant monoclonal antibody raised against human BAG1.
Antibody Species	Rabbit
Immunogen	Original antibody is raised against a synthetic peptide corresponding to human BAG1.
Reactivity	Human
Specificity	This antibody reacts to total human BAG-1 protein, including long (BAG-1L), medium (BAG-1M) and short (BAG-1S) isoforms.
Form	Liquid

Purification	Protein A purification
Isotype	IgG
Recommend Usage	Immunohistochemistry (1:500-1:1000) Western Blot (1:1000-1:2000) The optimal working dilution should be determined by the end user.
Storage Buffer	In PBS (50% glycerol, 1% BSA, 0.09% sodium azide)
Storage Instruction	Store at -20°C. Aliquot to avoid repeated freezing and thawing.
Note	This product contains sodium azide: a POISONOUS AND HAZARDOUS SUBSTANCE which should be handled by trained staff only.

## Applications

- Western Blot (Cell lysate)

Western blot analysis of HeLa cell lysates with BAG-1 monoclonal antibody, clone RM356 (Cat # MAB23159) at a 1:1000 dilution.

- Immunohistochemistry (Formalin/PFA-fixed paraffin-embedded sections)

Immunohistochemical staining (Formalin-fixed paraffin-embedded sections) of human breast cancer with BAG-1 monoclonal antibody, clone RM356 (Cat # MAB23159) at a 1:500 dilution.

## Gene Info — BAG1

Entrez GeneID	<a href="#">573</a>
Gene Name	BAG1
Gene Alias	RAP46
Gene Description	BCL2-associated athanogene
Omim ID	<a href="#">601497</a>
Gene Ontology	<a href="#">Hyperlink</a>
Gene Summary	The oncogene BCL2 is a membrane protein that blocks a step in a pathway leading to apoptosis or programmed cell death. The protein encoded by this gene binds to BCL2 and is referred to as BCL2-associated athanogene. It enhances the anti-apoptotic effects of BCL2 and represents a link between growth factor receptors and anti-apoptotic mechanisms. At least three protein isoforms are encoded by this mRNA through the use of a non-AUG (CUG) start site, and alternative, downstream, AUG translation initiation sites. [provided by RefSeq]

**Other Designations**

BCL2-associated athanogene 1

**Disease**

- [Cardiovascular Diseases](#)
- [Diabetes Mellitus](#)
- [Edema](#)
- [Head and Neck Neoplasms](#)
- [Narcolepsy](#)
- [Neoplasm Recurrence](#)
- [Neoplasms](#)