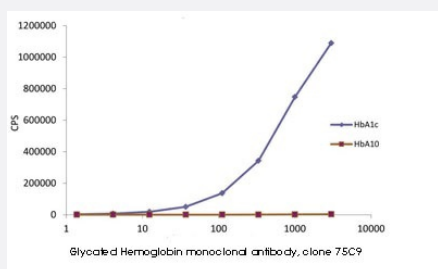


# Glycated Hemoglobin monoclonal antibody, clone 75C9

Catalog # MAB23139 Size 1 mg

## Applications

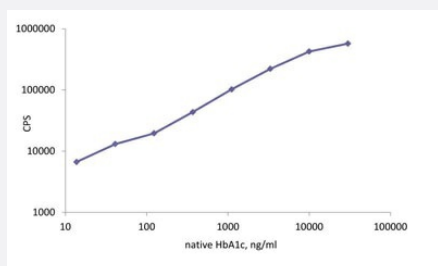


### Enzyme-linked Immunoabsorbent Assay

Specificity of Glycated Hemoglobin monoclonal antibody, clone 75C9 (Cat # MAB23139) interaction with HbA1c checked by direct ELISA: Native HbA1c or HbA1<sub>0</sub> were used as a coating (100 ng/well), Glycated Hemoglobin monoclonal antibody, clone 75C9 (Cat # MAB23139) was labeled with stable Eu<sup>3+</sup> chelate and served as detection, whereas Glycated Hemoglobin monoclonal antibody, clone 75C9 (Cat # MAB23139) detects only HbA1c.

### Sandwich ELISA

The sandwich fluoroimmunoassay of Glycated Hemoglobin monoclonal antibody, clone 75C9 (Cat # MAB23139) and Hemoglobin monoclonal antibody, clone Hb6 (Cat # MAB23140): Hemoglobin monoclonal antibody, clone Hb6 (Cat # MAB23140) was used as a coating (1 ug/well), Glycated Hemoglobin monoclonal antibody, clone 75C9 (Cat # MAB23139) was labeled with stable Eu<sup>3+</sup> chelate and served as detection (0.4 ug/well), native HbA1c was utilized as an antigen. MAb pair Hb6-75C9 was shown to detect specifically native glycated hemoglobin HbA1c.



## Specification

<b>Product Description</b>	Mouse monoclonal antibody raised against synthetic peptide of glycated hemoglobin.
<b>Immunogen</b>	A synthetic peptide corresponding to the N-terminal end of beta-globin.
<b>Host</b>	Mouse
<b>Reactivity</b>	Human
<b>Specificity</b>	Native human HbA1c, does not cross-react with non-glycated hemoglobin.

Form	Liquid
Preparation Method	This antibody is produced from a hybridoma have been derived from hybridization of Sp2/0 myeloma cells with spleen cells of Balb/c mice immunized with glycated (in vitro) synthetic peptide corresponding to the N-terminal end of beta-globin.
Purification	Protein A purification
Isotype	IgG1
Recommend Usage	Enzyme-linked Immunoabsorbent Assay Enzyme Immunoassay Sandwich ELISA (Hemoglobin monoclonal antibody, clone Hb6 (Cat # <a href="#">MAB23140</a> ) works as capture antibody in plate sandwich immunoassay together with Glycated Hemoglobin monoclonal antibody, clone 75C9 (Cat # MAB23139) as detection antibody.). The optimal working dilution should be determined by the end user.
Storage Buffer	In PBS, pH 7.4 (0.09% sodium azide).
Storage Instruction	Store at 4°C.
Note	This product contains sodium azide: a POISONOUS AND HAZARDOUS SUBSTANCE which should be handled by trained staff only.

## Applications

- Enzyme-linked Immunoabsorbent Assay

Specificity of Glycated Hemoglobin monoclonal antibody, clone 75C9 (Cat # MAB23139) interaction with HbA1c checked by direct ELISA: Native HbA1c or HbA1<sub>0</sub> were used as a coating (100 ng/well), Glycated Hemoglobin monoclonal antibody, clone 75C9 (Cat # MAB23139) was labeled with stable Eu<sup>3+</sup> chelate and served as detection, whereas Glycated Hemoglobin monoclonal antibody, clone 75C9 (Cat # MAB23139) detects only HbA1c.

- Sandwich ELISA

The sandwich fluoroimmunoassay of Glycated Hemoglobin monoclonal antibody, clone 75C9 (Cat # MAB23139) and Hemoglobin monoclonal antibody, clone Hb6 (Cat # MAB23140): Hemoglobin monoclonal antibody, clone Hb6 (Cat # MAB23140) was used as a coating (1 ug/well), Glycated Hemoglobin monoclonal antibody, clone 75C9 (Cat # MAB23139) was labeled with stable Eu<sup>3+</sup> chelate and served as detection (0.4 ug/well), native HbA1c was utilized as an antigen. MAb pair Hb6-75C9 was shown to detect specifically native glycated hemoglobin HbA1c.

- Enzyme Immunoassay