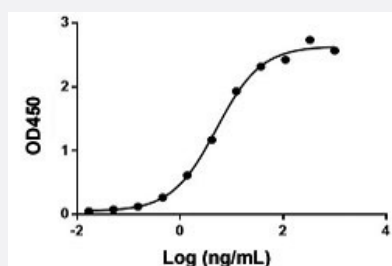


Anti-Rituximab monoclonal antibody, clone 17B6

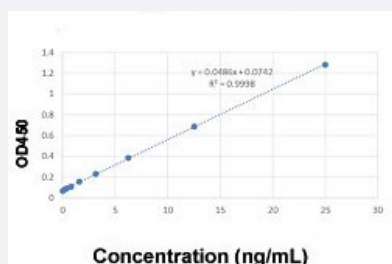
Catalog # MAB23137 Size 40 ug

Applications



Enzyme-linked Immunoabsorbent Assay

Anti-Rituximab monoclonal antibody, clone 17B6 (Cat # MAB23137) binds with Rituximab. Coating antigen: Rituximab, 1 ug/mL. Anti-Rituximab monoclonal antibody, clone 17B6 (Cat # MAB23137) dilution start from 2000 ng/mL. $EC_{50} = 5.075$ ng/mL. While the antibody does not recognize the human IgG (data not shown).



Sandwich ELISA

Standard curve of Rituximab Sandwich ELISA. The Rituximab Sandwich ELISA assay is developed by using Anti-Rituximab monoclonal antibody, clone 6C1 (Cat # MAB23136) and Anti-Rituximab monoclonal antibody, clone 17B6 (Cat # MAB23137) as the capture and detection antibodies, respectively. In this ELISA assay, Anti-Rituximab monoclonal antibody, clone 17B6 (Cat # MAB23137) was labeled with Biotin. The sensitivity is less than 1 ng/mL.

Specification

Product Description	Mouse monoclonal antibody raised against Rituximab. Target gene is CD20.
Immunogen	Rituximab.
Host	Mouse
Specificity	The product is specific for Rituximab. The antibody is recommended as a detection antibody in a pharmacokinetic (PK) bridging assay with capture antibody Anti-Rituximab monoclonal antibody, clone 6C1 (Cat # MAB23136).
Form	Lyophilized

Preparation Method	This antibody is produced from a hybridoma resulting from the fusion of partner and B-lymphocytes obtained from a mouse immunized with Rituximab.
Purification	Protein A purification
Isotype	IgG1
Recommend Usage	ELISA (ELISA detection: 0.01-0.1 ug/mL) (Direct/Indirect ELISA) Sandwich ELISA The optimal working dilution should be determined by the end user.
Inhibitory IC50	Non-inhibitory
Storage Buffer	Lyophilized from PBS, pH 7.4 (0.02% sodium azide).
Storage Instruction	Store at -20°C on dry atmosphere, lyophilized antibodies are stable at 1 years. After reconstitution with deionized water (or equivalent) to a final concentration of 0.5 mg/mL, it can be stored for 2-3 weeks at 2-8°C or for up to 12 months at -20°C or below. Aliquot to avoid repeated freezing and thawing.
Note	This product contains sodium azide: a POISONOUS AND HAZARDOUS SUBSTANCE which should be handled by trained staff only.

Applications

- Enzyme-linked Immunoabsorbent Assay

Anti-Rituximab monoclonal antibody, clone 17B6 (Cat # MAB23137) binds with Rituximab. Coating antigen: Rituximab, 1 ug/mL. Anti-Rituximab monoclonal antibody, clone 17B6 (Cat # MAB23137) dilution start from 2000 ng/mL. EC₅₀ = 5.075 ng/mL. While the antibody does not recognize the human IgG (data not shown).

- Sandwich ELISA

Standard curve of Rituximab Sandwich ELISA. The Rituximab Sandwich ELISA assay is developed by using Anti-Rituximab monoclonal antibody, clone 6C1 (Cat # MAB23136) and Anti-Rituximab monoclonal antibody, clone 17B6 (Cat # MAB23137) as the capture and detection antibodies, respectively. In this ELISA assay, Anti-Rituximab monoclonal antibody, clone 17B6 (Cat # MAB23137) was labeled with Biotin. The sensitivity is less than 1 ng/mL.

Gene Info — MS4A1

Entrez GeneID	931
Gene Name	MS4A1
Gene Alias	B1, Bp35, CD20, LEU-16, MGC3969, MS4A2, S7
Gene Description	membrane-spanning 4-domains, subfamily A, member 1

Omim ID [112210](#)

Gene Ontology [Hyperlink](#)

Gene Summary

This gene encodes a member of the membrane-spanning 4A gene family. Members of this nascent protein family are characterized by common structural features and similar intron/exon splice boundaries and display unique expression patterns among hematopoietic cells and nonlymphoid tissues. This gene encodes a B-lymphocyte surface molecule which plays a role in the development and differentiation of B-cells into plasma cells. This family member is localized to 11q12, among a cluster of family members. Alternative splicing of this gene results in two transcript variants which encode the same protein. [provided by RefSeq]

Other Designations

B-lymphocyte cell-surface antigen B1|CD20 antigen|CD20 receptor

Pathway

- [Hematopoietic cell lineage](#)

Disease

- [Breast cancer](#)
- [Breast Neoplasms](#)
- [Genetic Predisposition to Disease](#)
- [Lymphoma](#)
- [Neoplasm Recurrence](#)
- [Ovarian cancer](#)