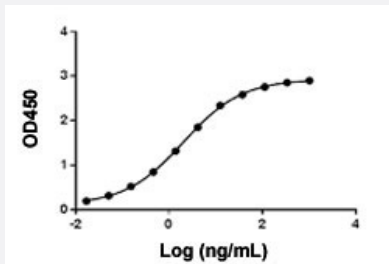


# Anti-Obinutuzumab monoclonal antibody, clone 16B7

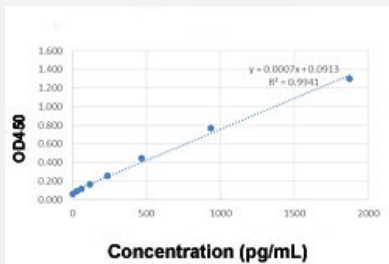
Catalog # MAB23132 Size 40 ug

## Applications



### Enzyme-linked Immunoabsorbent Assay

Anti-Obinutuzumab monoclonal antibody, clone 16B7 (Cat # MAB23132) binds with Obinutuzumab. Coating antigen: Obinutuzumab, 1 ug/mL. Anti-Obinutuzumab monoclonal antibody, clone 16B7 (Cat # MAB23132) dilution start from 1000 ng/mL.  $EC_{50} = 8.148$  ng/mL. While the antibody does not recognize the human IgG Fc fragment (data not shown).



### Sandwich ELISA

Standard curve of Obinutuzumab Sandwich ELISA. The Obinutuzumab Sandwich ELISA assay is developed by using Anti-Obinutuzumab monoclonal antibody, clone 18H8 (Cat # MAB23131) and Anti-Obinutuzumab monoclonal antibody, clone 16B7 (Cat # MAB23132) as the capture and detection antibodies, respectively. In this ELISA assay, Anti-Obinutuzumab monoclonal antibody, clone 16B7 (Cat # MAB23132) was labeled with Biotin. The sensitivity of detecting Obinutuzumab is about 30 pg/mL.

## Specification

<b>Product Description</b>	Mouse monoclonal antibody raised against Obinutuzumab. Target gene is CD20.
<b>Immunogen</b>	Obinutuzumab.
<b>Host</b>	Mouse
<b>Specificity</b>	The product is specific for Obinutuzumab. The antibody is recommended as a detection antibody in a pharmacokinetic (PK) bridging assay with capture antibody Anti-Obinutuzumab monoclonal antibody, clone 18H8 (Cat # <a href="#">MAB23131</a> ).
<b>Form</b>	Lyophilized

<b>Purification</b>	Protein A purification
<b>Isotype</b>	IgG2a, kappa
<b>Recommend Usage</b>	ELISA (ELISA detection: 0.01-1 ug/mL) (Direct/Indirect ELISA) Sandwich ELISA The optimal working dilution should be determined by the end user.
<b>Inhibitory IC50</b>	Non-inhibitory
<b>Storage Buffer</b>	Lyophilized from PBS, pH 7.4 (0.02% sodium azide).
<b>Storage Instruction</b>	Store at -20°C on dry atmosphere, lyophilized antibodies are stable at 1 years. After reconstitution with deionized water (or equivalent) to a final concentration of 0.5 mg/mL, it can be stored for 2-3 weeks at 2-8°C or for up to 12 months at -20°C or below. Aliquot to avoid repeated freezing and thawing.
<b>Note</b>	This product contains sodium azide: a POISONOUS AND HAZARDOUS SUBSTANCE which should be handled by trained staff only.

## Applications

- Enzyme-linked Immunoabsorbent Assay

Anti-Obinutuzumab monoclonal antibody, clone 16B7 (Cat # MAB23132) binds with Obinutuzumab. Coating antigen: Obinutuzumab, 1 ug/mL. Anti-Obinutuzumab monoclonal antibody, clone 16B7 (Cat # MAB23132) dilution start from 1000 ng/mL. EC<sub>50</sub> = 8.148 ng/mL. While the antibody does not recognize the human IgG Fc fragment (data not shown).

- Sandwich ELISA

Standard curve of Obinutuzumab Sandwich ELISA. The Obinutuzumab Sandwich ELISA assay is developed by using Anti-Obinutuzumab monoclonal antibody, clone 18H8 (Cat # MAB23131) and Anti-Obinutuzumab monoclonal antibody, clone 16B7 (Cat # MAB23132) as the capture and detection antibodies, respectively. In this ELISA assay, Anti-Obinutuzumab monoclonal antibody, clone 16B7 (Cat # MAB23132) was labeled with Biotin. The sensitivity of detecting Obinutuzumab is about 30 pg/mL.

## Gene Info — MS4A1

<b>Entrez GeneID</b>	<a href="#">931</a>
<b>Gene Name</b>	MS4A1
<b>Gene Alias</b>	B1, Bp35, CD20, LEU-16, MGC3969, MS4A2, S7
<b>Gene Description</b>	membrane-spanning 4-domains, subfamily A, member 1
<b>Omim ID</b>	<a href="#">112210</a>
<b>Gene Ontology</b>	<a href="#">Hyperlink</a>

**Gene Summary**

This gene encodes a member of the membrane-spanning 4A gene family. Members of this nascent protein family are characterized by common structural features and similar intron/exon splice boundaries and display unique expression patterns among hematopoietic cells and nonlymphoid tissues. This gene encodes a B-lymphocyte surface molecule which plays a role in the development and differentiation of B-cells into plasma cells. This family member is localized to 11q12, among a cluster of family members. Alternative splicing of this gene results in two transcript variants which encode the same protein. [provided by RefSeq]

**Other Designations**

B-lymphocyte cell-surface antigen B1|CD20 antigen|CD20 receptor

**Pathway**

- [Hematopoietic cell lineage](#)

**Disease**

- [Breast cancer](#)
- [Breast Neoplasms](#)
- [Genetic Predisposition to Disease](#)
- [Lymphoma](#)
- [Neoplasm Recurrence](#)
- [Ovarian cancer](#)