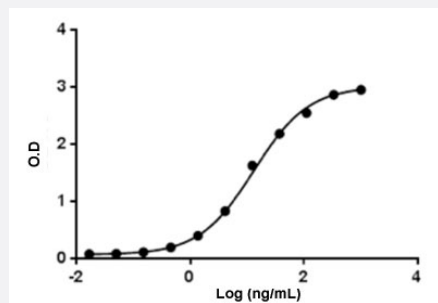


Anti-Atezolizumab monoclonal antibody, clone 10G9

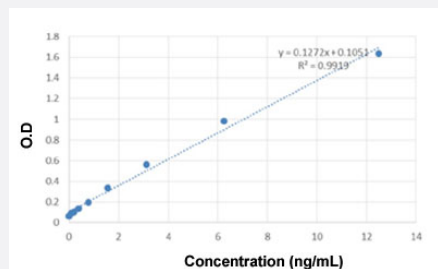
Catalog # MAB23119 Size 40 ug

Applications



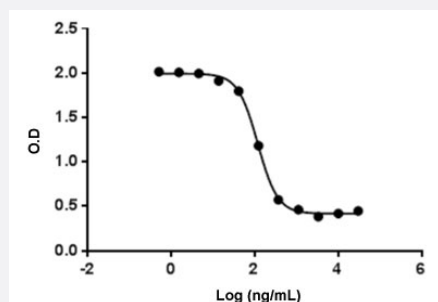
Enzyme-linked Immunoabsorbent Assay

Anti-Atezolizumab monoclonal antibody, clone 10G9 (Cat # MAB23119) binds with Atezolizumab. Coating antigen: Atezolizumab, 1 ug/mL. Anti-Atezolizumab monoclonal antibody, clone 10G9 dilution start from 1000 ng/mL. $EC_{50} = 13.19$ ng/mL. While the antibody does not recognize the human IgG Fc fragment (data not shown).



Sandwich ELISA

The Sandwich ELISA assay is developed by using Anti-Atezolizumab monoclonal antibody, clone 10G9 (Cat # MAB23119) and Anti-Atezolizumab monoclonal antibody, clone 6B12 (Biotin) (Cat # MAB23121) as capture and detection antibody, respectively. The sensitivity of detecting Rituximab is about 97 pg/mL.



Blocking

Anti-Atezolizumab monoclonal antibody, clone 10G9 (Cat # MAB23119) blocks Atezolizumab binding with PD-L1. Coating antigen: Atezolizumab, 0.5 ug/mL. Anti-Atezolizumab monoclonal antibody, clone 10G9 final concentration: 75 ng/mL. PD-L1 dilution start from 30 ug/mL. $IC_{50} = 118.2$ ng/mL.

Specification

Product Description

Mouse monoclonal antibody raised against Atezolizumab.
Target gene is PD-L1.

Immunogen	Atezolizumab.
Host	Mouse
Specificity	The product is specific for Atezolizumab. The antibody is recommended as a capture antibody in a pharmacokinetic (PK) bridging assay with detection antibody Anti-Atezolizumab monoclonal antibody, clone 6B12 (Biotin) (Cat # MAB23121).
Form	Lyophilized
Preparation Method	This antibody is produced from a hybridoma resulting from the fusion of partner and B-lymphocytes obtained from a mouse immunized with Atezolizumab.
Purification	Protein A purification
Isotype	IgG1, kappa
Recommend Usage	Blocking ELISA (0.01-0.1 ug/mL (Direct/Indirect/Inhibitory)) Sandwich ELISA The optimal working dilution should be determined by the end user.
Inhibitory IC50	0.118 ug/mL
Storage Buffer	Lyophilized from PBS, pH 7.4 (0.02% sodium azide).
Storage Instruction	Store at -20°C on dry atmosphere. The lyophilized product remains stable up to 1 year at -20°C from date of receipt. After reconstitution with deionized water (or equivalent) to a final concentration of 0.5 mg/mL, it can be stored for 2-3 weeks at 2-8°C or for up to 12 months at -20°C or below. Aliquot to avoid repeated freezing and thawing.
Note	This product contains sodium azide: a POISONOUS AND HAZARDOUS SUBSTANCE which should be handled by trained staff only.

Applications

- Enzyme-linked Immunoabsorbent Assay

Anti-Atezolizumab monoclonal antibody, clone 10G9 (Cat # MAB23119) binds with Atezolizumab. Coating antigen: Atezolizumab, 1 ug/mL. Anti-Atezolizumab monoclonal antibody, clone 10G9 dilution start from 1000 ng/mL. $EC_{50} = 13.19$ ng/mL. While the antibody does not recognize the human IgG Fc fragment (data not shown).

- Sandwich ELISA

The Sandwich ELISA assay is developed by using Anti-Atezolizumab monoclonal antibody, clone 10G9 (Cat # MAB23119) and Anti-Atezolizumab monoclonal antibody, clone 6B12 (Biotin) (Cat # MAB23121) as capture and detection antibody, respectively. The sensitivity of detecting Rituximab is about 97 pg/mL.

- Blocking

Anti-Atezolizumab monoclonal antibody, clone 10G9 (Cat # MAB23119) blocks Atezolizumab binding with PD-L1. Coating antigen: Atezolizumab, 0.5 ug/mL. Anti-Atezolizumab monoclonal antibody, clone 10G9 final concentration: 75 ng/mL. PD-L1 dilution start from 30 ug/mL. IC₅₀= 118.2 ng/mL.

Gene Info — CD274

Entrez GeneID	29126
Gene Name	CD274
Gene Alias	B7-H, B7H1, MGC142294, MGC142296, PD-L1, PDCD1L1, PDCD1LG1, PDL1
Gene Description	CD274 molecule
Omim ID	605402
Gene Ontology	Hyperlink
Other Designations	CD274 antigen OTTHUMP00000021029 programmed cell death 1 ligand 1

Pathway

- [Cell adhesion molecules \(CAMs\)](#)

Disease

- [Addison Disease](#)
- [Arthritis](#)
- [Autoimmune Diseases](#)
- [Diabetes Mellitus](#)
- [Genetic Predisposition to Disease](#)
- [Graves Disease](#)
- [Lupus Erythematosus](#)
- [Multiple Sclerosis](#)

- [Narcolepsy](#)
- [Rheumatoid Nodule](#)