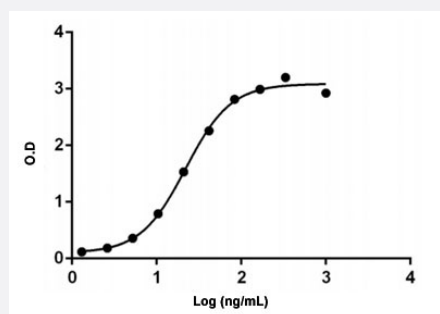


# Anti-Daratumumab monoclonal antibody, clone 6A3

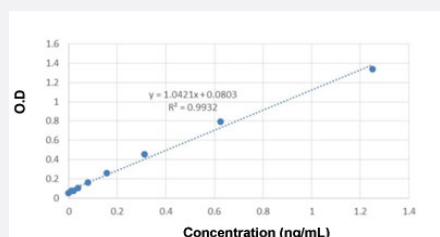
Catalog # MAB23093      Size 40 ug

## Applications



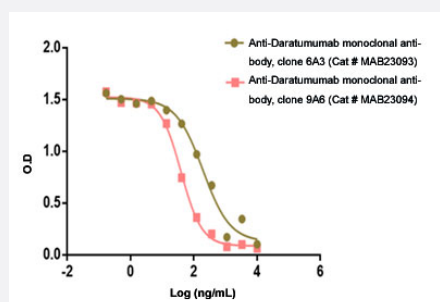
### Enzyme-linked Immunoabsorbent Assay

ELISA binding of Anti-Daratumumab monoclonal antibody, clone 6A3 (Cat # MAB23093) with Daratumumab. Coating antigen: Daratumumab, 1 ug/mL. Anti-Daratumumab monoclonal antibody, clone 6A3 dilutions start from 1000 ng/mL.  $EC_{50} = 22.05$  ng/mL. While the antibody does not recognize the human IgG Fc fragment (data not shown).



### Sandwich ELISA

The Sandwich ELISA assay is developed by using Anti-Daratumumab monoclonal antibody, clone 11F2 (Cat # MAB23092) and Anti-Daratumumab monoclonal antibody, clone 6A3 (Cat # MAB23093) as the capture and detection antibodies, respectively. In this ELISA assay, Anti-Daratumumab monoclonal antibody, clone 6A3 was labeled with Biotin. The sensitivity of detecting Daratumumab is up to 0.039 ng/mL.



### Blocking

Anti-Daratumumab monoclonal antibody, clone 6A3 (Cat # MAB23093) blocks Daratumumab binding with Human CD38 recombinant protein. Coating antigen: CD38 0.5 ug/mL. Daratumumab final concentration: 60 ng/mL. Anti-Daratumumab antibody dilutions start from 30 ug/mL.  $IC_{50} = 0.582$  ug/mL.

## Specification

### Product Description

Mouse monoclonal antibody raised against Daratumumab.  
Target gene is CD38.

Immunogen	Daratumumab.
Host	Mouse
Specificity	The product is specific for Daratumumab. The antibody is recommended as a detection antibody in a pharmacokinetic (PK) bridging assay with capture antibody : Anti-Daratumumab monoclonal antibody, clone 11F2 (Cat # <a href="#">MAB23092</a> ).
Form	Lyophilized
Preparation Method	The antibody is produced from a hybridoma resulting from the fusion of partner and B-lymphocytes obtained from a mouse immunized with Daratumumab.
Purification	Protein A purification
Isotype	IgG1
Recommend Usage	Blocking (10-50 ug/mL) ELISA (0.01-0.1 ug/mL (Direct/Indirect/Inhibitory)) Sandwich ELISA The optimal working dilution should be determined by the end user.
Inhibitory IC50	0.582 ug/mL
Storage Buffer	Lyophilized from PBS, pH 7.4 (0.02% sodium azide).
Storage Instruction	Store at -20°C. The lyophilized product remains stable up to 1 year at -20°C from date of receipt. After reconstitution with deionized water (or equivalent) to a final concentration of 0.5 mg/mL, it can be stored for 2-3 weeks at 2-8°C or for up to 12 months at -20°C or below. Aliquot to avoid repeated freezing and thawing.
Note	This product contains sodium azide: a POISONOUS AND HAZARDOUS SUBSTANCE which should be handled by trained staff only.

## Applications

- Enzyme-linked Immunoabsorbent Assay

ELISA binding of Anti-Daratumumab monoclonal antibody, clone 6A3 (Cat # MAB23093) with Daratumumab. Coating antigen: Daratumumab, 1 ug/mL. Anti-Daratumumab monoclonal antibody, clone 6A3 dilutions start from 1000 ng/mL. EC<sub>50</sub> = 22.05 ng/mL. While the antibody does not recognize the human IgG Fc fragment (data not shown).

- Sandwich ELISA

The Sandwich ELISA assay is developed by using Anti-Daratumumab monoclonal antibody, clone 11F2 (Cat # MAB23092) and Anti-Daratumumab monoclonal antibody, clone 6A3 (Cat # MAB23093) as the capture and detection antibodies, respectively. In this ELISA assay, Anti-Daratumumab monoclonal antibody, clone 6A3 was labeled with Biotin. The sensitivity of detecting Daratumumab is up to 0.039 ng/mL.

- Blocking

Anti-Daratumumab monoclonal antibody, clone 6A3 (Cat # MAB23093) blocks Daratumumab binding with Human CD38 recombinant protein. Coating antigen: CD38 0.5 ug/mL. Daratumumab final concentration: 60 ng/mL. Anti-Daratumumab antibody dilutions start from 30 ug/mL. IC<sub>50</sub> = 0.582 ug/mL.

## Gene Info — CD38

Entrez GeneID	<a href="#">952</a>
Gene Name	CD38
Gene Alias	T10
Gene Description	CD38 molecule
Omim ID	<a href="#">107270</a>
Gene Ontology	<a href="#">Hyperlink</a>
Gene Summary	CD38 is a novel multifunctional ectoenzyme widely expressed in cells and tissues especially in leukocytes. CD38 also functions in cell adhesion, signal transduction and calcium signaling. [provided by RefSeq]
Other Designations	ADP-ribosyl cyclase/cyclic ADP-ribose hydrolase CD38 antigen CD38 antigen (p45) cyclic ADP-ribose hydrolase

## Pathway

- [Calcium signaling pathway](#)
- [Hematopoietic cell lineage](#)
- [Metabolic pathways](#)
- [Nicotinate and nicotinamide metabolism](#)

## Disease

- [Cell Transformation](#)
- [Child Development Disorders](#)
- [Diabetes Mellitus](#)

- [Genetic Predisposition to Disease](#)
- [Leukemia](#)
- [Lupus Erythematosus](#)
- [Lymphoma](#)
- [Osteoporosis](#)