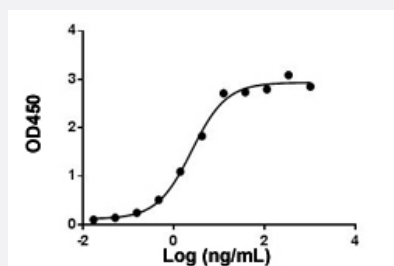


# Anti-Atezolizumab monoclonal antibody, clone 55D8

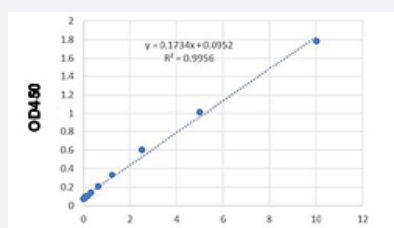
Catalog # MAB23079      Size 40 ug

## Applications



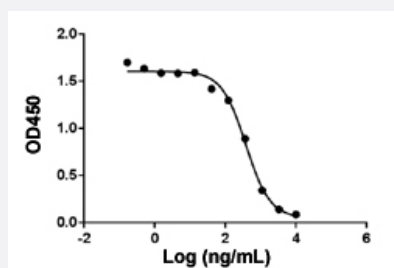
### Enzyme-linked Immunoabsorbent Assay

ELISA binding of Anti-Atezolizumab monoclonal antibody, clone 55D8 (Cat # MAB23079) with Atezolizumab. While the antibody does not recognize the human IgG Fc fragment (data not shown). Coating antigen: Atezolizumab, 1 ug/mL. Anti-Atezolizumab monoclonal antibody, clone 55D8 (Cat # MAB23079) dilutions start from 1000 ng/mL.  $EC_{50} = 2.446$  ng/mL.



### Sandwich ELISA

Standard curve of Atezolizumab Sandwich ELISA. The Atezolizumab Sandwich ELISA assay is developed by using Anti-Atezolizumab monoclonal antibody, clone 55D8 (Cat # MAB23079) and Anti-Atezolizumab monoclonal antibody, clone 43H11 (Cat # MAB23080) as the capture and detection antibodies, respectively. In this ELISA assay, Anti-Atezolizumab monoclonal antibody, clone 43H11 (Cat # MAB23080) was labeled with Biotin. The sensitivity of detecting Atezolizumab is up to 156 pg/mL.



### Blocking

Anti-Atezolizumab monoclonal antibody, clone 55D8 (Cat # MAB23079) blocks Atezolizumab binding with Human PD-L1 recombinant protein (PD-L1 Fc Chimera, Human). Coating antigen: Atezolizumab, 1 ug/mL. PD-L1-Fc-biotin final concentration: 10 ng/mL. Anti-Atezolizumab monoclonal antibody, clone 55D8 (Cat # MAB23079) dilutions start from 10 ug/mL.  $IC_{50} = 0.39$  ug/mL.

## Specification

### Product Description

Rabbit monoclonal antibody raised against Atezolizumab.  
Target gene is PD-L1.

<b>Immunogen</b>	Atezolizumab.
<b>Host</b>	Rabbit
<b>Specificity</b>	The antibody is recommended as a capture antibody in a pharmacokinetic (PK) bridging assay with detection antibody Anti-Atezolizumab monoclonal antibody, clone 43H11 (Cat # <a href="#">MAB23080</a> ).
<b>Form</b>	Lyophilized
<b>Preparation Method</b>	This antibody is produced from a hybridoma resulting from the fusion of partner and B-lymphocytes obtained from a rabbit immunized with Atezolizumab.
<b>Purification</b>	Protein A purification
<b>Isotype</b>	IgG
<b>Recommend Usage</b>	ELISA (ELISA capture: 0.01-0.1 ug/mL; ELISA blocking: 10-50 ug/mL) (Direct/Indirect/Inhibitory ELISA) Sandwich ELISA The optimal working dilution should be determined by the end user.
<b>Inhibitory IC50</b>	0.391 ug/mL
<b>Storage Buffer</b>	Lyophilized from PBS, pH 7.4 (0.02% sodium azide).
<b>Storage Instruction</b>	Store at -20°C. The lyophilized product remains stable up to 1 year at -20°C from date of receipt. After reconstitution with deionized water (or equivalent) to a final concentration of 0.5 mg/mL, it can be stored for 2-3 weeks at 2-8°C or for up to 12 months at -20°C or below. Aliquot to avoid repeated freezing and thawing.
<b>Note</b>	This product contains sodium azide: a POISONOUS AND HAZARDOUS SUBSTANCE which should be handled by trained staff only.

## Applications

- Enzyme-linked Immunoabsorbent Assay

ELISA binding of Anti-Atezolizumab monoclonal antibody, clone 55D8 (Cat # MAB23079) with Atezolizumab. While the antibody does not recognize the human IgG Fc fragment (data not shown). Coating antigen: Atezolizumab, 1 ug/mL. Anti-Atezolizumab monoclonal antibody, clone 55D8 (Cat # MAB23079) dilutions start from 1000 ng/mL. EC<sub>50</sub> = 2.446 ng/mL.

- Sandwich ELISA

Standard curve of Atezolizumab Sandwich ELISA. The Atezolizumab Sandwich ELISA assay is developed by using Anti-Atezolizumab monoclonal antibody, clone 55D8 (Cat # MAB23079) and Anti-Atezolizumab monoclonal antibody, clone 43H11 (Cat # MAB23080) as the capture and detection antibodies, respectively. In this ELISA assay, Anti-Atezolizumab monoclonal antibody, clone 43H11 (Cat # MAB23080) was labeled with Biotin. The sensitivity of detecting Atezolizumab is up to 156 pg/mL.

- Blocking

Anti-Atezolizumab monoclonal antibody, clone 55D8 (Cat # MAB23079) blocks Atezolizumab binding with Human PD-L1 recombinant protein (PD-L1 Fc Chimera, Human). Coating antigen: Atezolizumab, 1 ug/mL. PD-L1-Fc-biotin final concentration: 10 ng/mL. Anti-Atezolizumab monoclonal antibody, clone 55D8 (Cat # MAB23079) dilutions start from 10 ug/mL. IC<sub>50</sub> = 0.39 ug/mL.

## Gene Info — CD274

Entrez GeneID	<a href="#">29126</a>
Gene Name	CD274
Gene Alias	B7-H, B7H1, MGC142294, MGC142296, PD-L1, PDCD1L1, PDCD1LG1, PDL1
Gene Description	CD274 molecule
Omim ID	<a href="#">605402</a>
Gene Ontology	<a href="#">Hyperlink</a>
Other Designations	CD274 antigen OTTHUMP00000021029 programmed cell death 1 ligand 1

## Pathway

- [Cell adhesion molecules \(CAMs\)](#)

## Disease

- [Addison Disease](#)
- [Arthritis](#)
- [Autoimmune Diseases](#)
- [Diabetes Mellitus](#)
- [Genetic Predisposition to Disease](#)
- [Graves Disease](#)
- [Lupus Erythematosus](#)
- [Multiple Sclerosis](#)

- [Narcolepsy](#)
- [Rheumatoid Nodule](#)