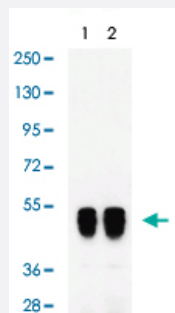


# SARS-CoV N monoclonal antibody, clone 3851

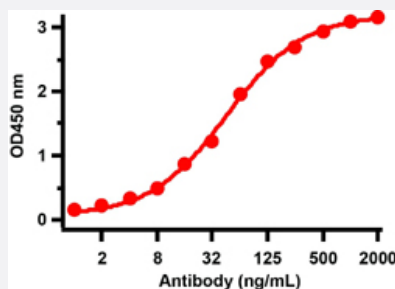
Catalog # MAB22372      Size 100 ug

## Applications



### Western Blot (Recombinant protein)

Western Blot with human recombinant protein. Loading: 50 ng per lane of human nucleocapsid recombinant protein. Antibodies: SARS-CoV N monoclonal antibody, clone 3851 (Cat # MAB22372), 1 h incubation at RT in 5% NFDM/TBST. Secondary: Goat anti-mouse IgG HRP conjugate at 1:5000 dilution. Lane 1: 0.5 ug/mL, Lane 2: 1 ug/mL.



### Enzyme-linked Immunoabsorbent Assay

An ELISA was performed using human SARS-CoV-2 Nucleocapsid recombinant protein as coating antigen and this antibody, as the capture antibody. Secondary: Goat anti-mouse IgG HRP conjugate at 1:20000 dilution. Detection range is from 1 ng/mL to 2000 ng/mL.

## Specification

Product Description	Mouse monoclonal antibody raised against recombinant SARS-CoV N.
Immunogen	Recombinant protein corresponding to amino acids 1-49 of SARS-CoV Nucleoprotein.
Host	Mouse
Reactivity	SARS-CoV
Specificity	Specific for the nucleoprotein of the SARS virus. This antibody cross react with native SARS virus and with recombinant Covid-19 NP. They do not cross react with native MERS virus.
Form	Liquid

<b>Purification</b>	Protein A chromatography or sequential differential precipitations.
<b>Isotype</b>	IgG2b
<b>Recommend Usage</b>	ELISA Immunofluorescence Western Blot The optimal working dilution should be determined by the end user.
<b>Storage Buffer</b>	In 0.01 M PBS, pH 7.2 (0.09% sodium azide).
<b>Storage Instruction</b>	Store at -20°C. Aliquot to avoid repeated freezing and thawing.
<b>Note</b>	This product contains sodium azide: a POISONOUS AND HAZARDOUS SUBSTANCE which should be handled by trained staff only.

## Applications

- Western Blot (Recombinant protein)

Western Blot with human recombinant protein. Loading: 50 ng per lane of human nucleocapsid recombinant protein. Antibodies: SARS-CoV N monoclonal antibody, clone 3851 (Cat # MAB22372), 1 h incubation at RT in 5% NFDM/TBST. Secondary: Goat anti-mouse IgG HRP conjugate at 1:5000 dilution. Lane 1: 0.5 ug/mL, Lane 2: 1 ug/mL.

- Immunofluorescence

- Enzyme-linked Immunoabsorbent Assay

An ELISA was performed using human SARS-CoV-2 Nucleocapsid recombinant protein as coating antigen and this antibody, as the capture antibody. Secondary: Goat anti-mouse IgG HRP conjugate at 1:20000 dilution. Detection range is from 1 ng/mL to 2000 ng/mL.