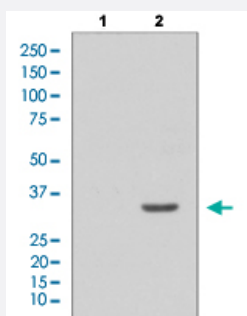


CDK2 (phospho Y15) monoclonal antibody, clone GBB-3

Catalog # MAB22314

Size 100 uL

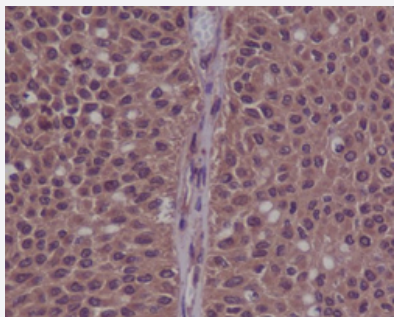
Applications



Western Blot (Cell lysate)

Western blot analysis of Phospho-CDK2 (Y15) expression in Lane 1: HeLa treated with AP, Lane 2: HeLa cell lysate.

Immunohistochemistry (Formalin/PFA-fixed paraffin-embedded sections)



Immunohistochemical staining (Formalin-fixed paraffin-embedded sections) of human bladder cancer. Phospho-CDK2 (Y15) was detected in paraffin-embedded section. Heat mediated antigen retrieval was performed in citrate buffer (pH 6, epitope retrieval solution) for 20 minutes. The tissue section was blocked with 10% goat serum. The tissue section was then incubated with 1 ug/mL CDK2 (phospho Y15) monoclonal antibody, clone GBB-3 overnight at 4°C. Biotinylated goat anti Rabbit IgG antibody was used as secondary antibody and incubated for 30 minutes at 37°C. The tissue section was developed using Streptavidin-Biotin-Complex (SABC) with DAB as the chromogen.

Specification

Product Description	Rabbit monoclonal antibody raised against synthetic phosphopeptide of human CDK2.
Immunogen	Synthetic phosphopeptide corresponding to residues surrounding Y15 of human CDK2.
Host	Rabbit
Reactivity	Human

Form	Liquid
Purification	Affinity purification
Isotype	IgG
Recommend Usage	Immunohistochemistry (1:50-1:200) Immunoprecipitation (1:50) Western Blot (1:1000-1:2000) The optimal working dilution should be determined by the end user.
Storage Buffer	In PBS, 150 mM NaCl, pH 7.4 (50% glycerol, 0.02% sodium azide).
Storage Instruction	Store at 4°C for short term. For long term storage, store at -20°C. Aliquot to avoid repeated freezing and thawing.
Note	This product contains sodium azide: a POISONOUS AND HAZARDOUS SUBSTANCE which should be handled by trained staff only.

Applications

- Western Blot (Cell lysate)

Western blot analysis of Phospho-CDK2 (Y15) expression in Lane 1: HeLa treated with AP, Lane 2: HeLa cell lysate.

- Immunohistochemistry (Formalin/PFA-fixed paraffin-embedded sections)

Immunohistochemical staining (Formalin-fixed paraffin-embedded sections) of human bladder cancer. Phospho-CDK2 (Y15) was detected in paraffin-embedded section. Heat mediated antigen retrieval was performed in citrate buffer (pH 6, epitope retrieval solution) for 20 minutes. The tissue section was blocked with 10% goat serum. The tissue section was then incubated with 1 ug/mL CDK2 (phospho Y15) monoclonal antibody, clone GBB-3 overnight at 4°C. Biotinylated goat anti Rabbit IgG antibody was used as secondary antibody and incubated for 30 minutes at 37°C. The tissue section was developed using Streptavidin-Biotin-Complex (SABC) with DAB as the chromogen.

- Immunoprecipitation

Gene Info — CDK2

Entrez GeneID	1017
Protein Accession#	P24941
Gene Name	CDK2
Gene Alias	p33(CDK2)
Gene Description	cyclin-dependent kinase 2

Omim ID [116953](#)

Gene Ontology [Hyperlink](#)

Gene Summary

The protein encoded by this gene is a member of the Ser/Thr protein kinase family. This protein kinase is highly similar to the gene products of *S. cerevisiae* cdc28, and *S. pombe* cdc2. It is a catalytic subunit of the cyclin-dependent protein kinase complex, whose activity is restricted to the G1-S phase, and essential for cell cycle G1/S phase transition. This protein associates with and regulated by the regulatory subunits of the complex including cyclin A or E, CDK inhibitor p21Cip1 (CDKN1A) and p27Kip1 (CDKN1B). Its activity is also regulated by its protein phosphorylation. Two alternatively spliced variants and multiple transcription initiation sites of this gene have been reported. [provided by RefSeq]

Other Designations cdc2-related protein kinase|cell division kinase 2|p33 protein kinase

Pathway

- [Cell cycle](#)
- [p53 signaling pathway](#)
- [Pathways in cancer](#)
- [Prostate cancer](#)
- [Small cell lung cancer](#)

Disease

- [Azoospermia](#)
- [Breast cancer](#)
- [Breast Neoplasms](#)
- [Chromosome Aberrations](#)
- [Diabetes Mellitus](#)
- [Genetic Predisposition to Disease](#)
- [Kidney Failure](#)
- [Lymphoma](#)
- [Neoplasm Invasiveness](#)

- [Ovarian cancer](#)
- [Ovarian Neoplasms](#)