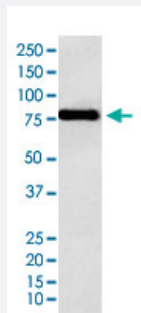


# MTDH monoclonal antibody, clone ADIF-13

Catalog # MAB22303      Size 100 uL

## Applications



### Western Blot (Cell lysate)

Western Blot (cell lysate) analysis of HeLa cell lysate.

## Specification

<b>Product Description</b>	Rabbit monoclonal antibody raised against synthetic protein of human MTDH.
<b>Immunogen</b>	A synthetic peptide corresponding to human MTDH.
<b>Host</b>	Rabbit
<b>Reactivity</b>	Human
<b>Specificity</b>	This antibody reacts with human, mouse, rat MTDH, in native form and recombinant. Superfamily members of MTDH are not reactive to antibody.
<b>Form</b>	Liquid
<b>Purification</b>	Affinity purification
<b>Isotype</b>	IgG
<b>Recommend Usage</b>	Western Blot (1:1000-5000) The optimal working dilution should be determined by the end user.
<b>Storage Buffer</b>	In PBS, 150 mM NaCl, pH 7.4 (50% glycerol, 0.02% sodium azide).

**Storage Instruction**

Store at 4°C. For long term storage store at -20°C.  
Aliquot to avoid repeated freezing and thawing.

**Note**

This product contains sodium azide: a POISONOUS AND HAZARDOUS SUBSTANCE which should be handled by trained staff only.

## Applications

- Western Blot (Cell lysate)

Western Blot (cell lysate) analysis of HeLa cell lysate.

## Gene Info — MTDH

**Entrez GeneID**[92140](#)**Protein Accession#**[Q86UE4](#)**Gene Name**

MTDH

**Gene Alias**

3D3, AEG-1, AEG1, LYRIC

**Gene Description**

metadherin

**Omim ID**[610323](#)**Gene Ontology**[Hyperlink](#)**Other Designations**

LYRIC/3D3|astrocyte elevated gene-1|metastasis adhesion protein

## Disease

- [Genetic Predisposition to Disease](#)
- [Migraine Disorders](#)