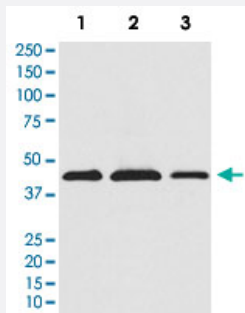


AKT1S1 monoclonal antibody, clone ACHD-1

Catalog # MAB22291 Size 100 uL

Applications



Western Blot

Western Blot analysis of (1) HeLa, (2) RAW 264.7, (3) PC12 cell lysates.

Specification

| | |
|----------------------------|---|
| Product Description | Rabbit monoclonal antibody raised against synthetic protein of human AKT1S1. |
| Immunogen | A synthetic peptide corresponding to human AKT1S1. |
| Host | Rabbit |
| Reactivity | Human, Mouse, Rat |
| Specificity | This antibody reacts with human, mouse, rat AKT1S1, in native form and recombinant. Superfamily members of AKT1S1 are not reactive to antibody. |
| Form | Liquid |
| Purification | Affinity purification |
| Isotype | IgG |
| Recommend Usage | Immunoprecipitation (1:50) Western Blot (1:500-2000) The optimal working dilution should be determined by the end user. |
| Storage Buffer | In PBS, 150 mM NaCl, pH 7.4 (50% glycerol, 0.02% sodium azide). |

Storage Instruction

Store at 4°C. For long term storage store at -20°C.
Aliquot to avoid repeated freezing and thawing.

Note

This product contains sodium azide: a POISONOUS AND HAZARDOUS SUBSTANCE which should be handled by trained staff only.

Applications

- Western Blot

Western Blot analysis of (1) HeLa, (2) RAW 264.7, (3) PC12 cell lysates.

- Immunoprecipitation

Gene Info — AKT1S1

Entrez GeneID [84335](#)

Protein Accession# [Q96B36](#)

Gene Name AKT1S1

Gene Alias Lobe, MGC2865, PRAS40

Gene Description AKT1 substrate 1 (proline-rich)

Omim ID [610221](#)

Gene Ontology [Hyperlink](#)

Gene Summary AKT1S1 is a proline-rich substrate of AKT (MIM 164730) that binds 14-3-3 protein (see YWHAH, MIM 113508) when phosphorylated (Kovacina et al., 2003 [PubMed 12524439]).[supplied by OMIM]

Other Designations OTTHUMP00000196757|OTTHUMP00000196758|OTTHUMP00000196759|OTTHUMP00000196760|proline-rich Akt substrate, 40 kDa