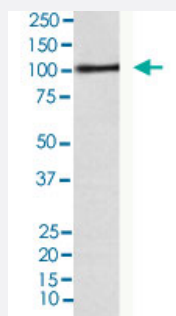


# AP2A1 monoclonal antibody, clone AFDO-1

Catalog # MAB22286      Size 100 uL

## Applications



### Western Blot (Cell lysate)

Western blot analysis of A-431 cell lysate.

## Specification

<b>Product Description</b>	Rabbit monoclonal antibody raised against synthetic peptide of human AP2A1.
<b>Immunogen</b>	A synthetic peptide corresponding to human AP2A1.
<b>Host</b>	Rabbit
<b>Reactivity</b>	Human
<b>Specificity</b>	The antibody reacts with human AP2A1, in native form and recombinant. Superfamily members of A P2A1 are not reactive to this antibody.
<b>Form</b>	Liquid
<b>Purification</b>	Affinity purification
<b>Isotype</b>	IgG
<b>Recommend Usage</b>	Flow Cytometry (1:100) Immunocytochemistry (1:50-1:200) Immunofluorescence (1:50-1:200) Immunohistochemistry (1:50-1:200) Western Blot (1:500-1:2000) The optimal working dilution should be determined by the end user.

Storage Buffer	In PBS, 150 mM NaCl, pH 7.4 (50% glycerol, 0.02% sodium azide).
Storage Instruction	Store at 4°C for short term storage. For long term storage store at -20°C. Aliquot to avoid repeated freezing and thawing.
Note	This product contains sodium azide: a POISONOUS AND HAZARDOUS SUBSTANCE which should be handled by trained staff only.

## Applications

- Western Blot (Cell lysate)

Western blot analysis of A-431 cell lysate.

- Immunohistochemistry

- Immunocytochemistry

- Immunofluorescence

- Flow Cytometry

## Gene Info — AP2A1

Entrez GeneID	<a href="#">160</a>
Protein Accession#	<a href="#">O95782</a>
Gene Name	AP2A1
Gene Alias	ADTAA, AP2-ALPHA, CLAPA1
Gene Description	adaptor-related protein complex 2, alpha 1 subunit
Omim ID	<a href="#">601026</a>
Gene Ontology	<a href="#">Hyperlink</a>

Gene Summary	This gene encodes the alpha 1 adaptin subunit of the adaptor protein 2 (AP-2) complex found in clathrin coated vesicles. The AP-2 complex is a heterotetramer consisting of two large adaptins (alpha or beta), a medium adaptin (mu), and a small adaptin (sigma). The complex is part of the protein coat on the cytoplasmic face of coated vesicles which links clathrin to receptors in vesicles. Alternative splicing of this gene results in two transcript variants encoding two different isoforms. A third transcript variant has been described, but its full length nature has not been determined. [provided by RefSeq]
--------------	---

**Other Designations**

100 kDa coated vesicle protein A|adaptin, alpha A|clathrin-associated/assembly/adaptor protein, large, alpha 1

---

**Pathway**

- [Endocytosis](#)