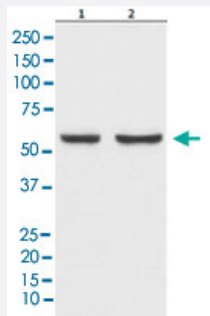


SLC7A11 monoclonal antibody, clone ACGI-19

Catalog # MAB22239 Size 100 uL

Applications



Western Blot

Western blot analysis of Lane 1: HepG2 cell lysate; Lane 2: Mouse brain lysate.

Specification

Product Description	Rabbit monoclonal antibody raised against synthetic peptide of human SLC7A11.
Immunogen	A synthetic peptide corresponding to human SLC7A11.
Host	Rabbit
Reactivity	Human, Mouse
Specificity	The antibody reacts with human, mouse SLC7A11, in native form and recombinant. Superfamily members of SLC7A11 are not reactive to this antibody.
Form	Liquid
Purification	Affinity purification
Isotype	IgG
Recommend Usage	Immunoprecipitation (1:50) Western Blot (1:500-1:2000) The optimal working dilution should be determined by the end user.
Storage Buffer	In PBS, 150 mM NaCl, pH 7.4 (50% glycerol, 0.02% sodium azide).

Storage Instruction

Store at 4°C for short term storage. For long term storage store at -20°C.
Aliquot to avoid repeated freezing and thawing.

Note

This product contains sodium azide: a POISONOUS AND HAZARDOUS SUBSTANCE which should be handled by trained staff only.

Applications

- Western Blot

Western blot analysis of Lane 1: HepG2 cell lysate; Lane 2: Mouse brain lysate.

- Immunoprecipitation

Gene Info — SLC7A11

Entrez GeneID [23657](#)

Protein Accession# [Q9UPY5](#)

Gene Name SLC7A11

Gene Alias CCBR1, xCT

Gene Description solute carrier family 7, (cationic amino acid transporter, y+ system) member 11

Omim ID [607933](#)

Gene Ontology [Hyperlink](#)

Gene Summary SLC7A11 is a member of a heteromeric Na(+)-independent anionic amino acid transport system highly specific for cystine and glutamate. In this system, designated system Xc(-), the anionic form of cystine is transported in exchange for glutamate.[supplied by OMIM]

Other Designations cystine/glutamate transporter

Disease

- [Cleft Lip](#)
- [Cleft Palate](#)
- [Tooth Abnormalities](#)