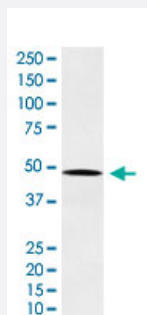


NCK1 monoclonal antibody, clone AFEG-14

Catalog # MAB22205 Size 100 uL

Applications



Western Blot (Cell lysate)

Western Blot (cell lysate) analysis of HeLa cell lysate.

Specification

Product Description	Rabbit monoclonal antibody raised against synthetic protein of human NCK1.
Immunogen	A synthetic peptide corresponding to human NCK1.
Host	Rabbit
Reactivity	Human, Mouse, Rat
Specificity	This antibody reacts with human, mouse, rat NCK1, in native form and recombinant. Superfamily members of NCK1 are not reactive to antibody.
Form	Liquid
Purification	Affinity purification
Isotype	IgG
Recommend Usage	Western Blot (1:500-2000) The optimal working dilution should be determined by the end user.
Storage Buffer	In PBS, 150 mM NaCl, pH 7.4 (50% glycerol, 0.02% sodium azide).

Storage Instruction

Store at 4°C. For long term storage store at -20°C.
Aliquot to avoid repeated freezing and thawing.

Note

This product contains sodium azide: a POISONOUS AND HAZARDOUS SUBSTANCE which should be handled by trained staff only.

Applications

- Western Blot (Cell lysate)

Western Blot (cell lysate) analysis of HeLa cell lysate.

Gene Info — NCK1

Entrez GeneID[4690](#)**Protein Accession#**[P16333](#)**Gene Name**

NCK1

Gene Alias

MGC12668, NCK, NCKalpha

Gene Description

NCK adaptor protein 1

Omim ID[600508](#)**Gene Ontology**[Hyperlink](#)**Gene Summary**

The protein encoded by this gene is one of the signaling and transforming proteins containing Src homology 2 and 3 (SH2 and SH3) domains. It is located in the cytoplasm and is an adaptor protein involved in transducing signals from receptor tyrosine kinases to downstream signal recipients such as RAS. [provided by RefSeq]

Other Designations

NCK tyrosine kinase|SH2/SH3 adaptor protein NCK-alpha|melanoma NCK protein|non-catalytic region of tyrosine kinase

Pathway

- [Axon guidance](#)
- [ErbB signaling pathway](#)
- [Pathogenic Escherichia coli infection - EHEC](#)
- [T cell receptor signaling pathway](#)