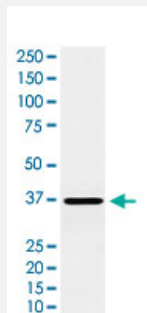


CRX monoclonal antibody, clone AFIO-3

Catalog # MAB22200 Size 100 uL

Applications



Western Blot (Cell lysate)

Western Blot (cell lysate) analysis of Y-79 cell lysate.

Specification

Product Description	Rabbit monoclonal antibody raised against synthetic protein of human CRX.
Immunogen	A synthetic peptide corresponding to human CRX.
Host	Rabbit
Reactivity	Human
Specificity	This antibody reacts with human CRX, in native form and recombinant. Superfamily members of CRX are not reactive to antibody.
Form	Liquid
Purification	Affinity purification
Isotype	IgG
Recommend Usage	Western Blot (1:500-2000) The optimal working dilution should be determined by the end user.
Storage Buffer	In PBS, 150 mM NaCl, pH 7.4 (50% glycerol, 0.02% sodium azide).

Storage Instruction

Store at 4°C. For long term storage store at -20°C.
Aliquot to avoid repeated freezing and thawing.

Note

This product contains sodium azide: a POISONOUS AND HAZARDOUS SUBSTANCE which should be handled by trained staff only.

Applications

- Western Blot (Cell lysate)

Western Blot (cell lysate) analysis of Y-79 cell lysate.

Gene Info — CRX

Entrez GeneID[1406](#)**Protein Accession#**[O43186](#)**Gene Name**

CRX

Gene Alias

CORD2, CRD, LCA7, OTX3

Gene Description

cone-rod homeobox

Omim ID[120970 268000 602225](#)**Gene Ontology**[Hyperlink](#)**Gene Summary**

The protein encoded by this gene is a photoreceptor-specific transcription factor which plays a role in the differentiation of photoreceptor cells. This homeodomain protein is necessary for the maintenance of normal cone and rod function. Mutations in this gene are associated with photoreceptor degeneration, Leber congenital amaurosis type III and the autosomal dominant cone-rod dystrophy 2. Several alternatively spliced transcript variants of this gene have been described, but the full-length nature of some variants has not been determined. [provided by RefSeq]

Other Designations

cone-rod homeobox protein|orthodenticle homeobox 3

Disease

- [Blindness](#)
- [Optic Atrophy](#)
- [Retinal Diseases](#)

- [Retinitis Pigmentosa](#)