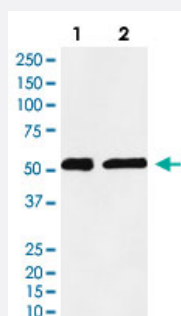


# KPNA2 monoclonal antibody, clone AEAF-11

Catalog # MAB22164      Size 100 uL

## Applications



### Western Blot

Western Blot analysis of (1) HeLa cell lysate, (2) C6 cell lysate.

## Specification

<b>Product Description</b>	Rabbit monoclonal antibody raised against synthetic protein of human KPNA2.
<b>Immunogen</b>	A synthetic peptide corresponding to human KPNA2.
<b>Host</b>	Rabbit
<b>Reactivity</b>	Human, Mouse, Rat
<b>Specificity</b>	This antibody reacts with human, mouse, rat KPNA2, in native form and recombinant. Superfamily members of KPNA2 are not reactive to antibody.
<b>Form</b>	Liquid
<b>Purification</b>	Affinity purification
<b>Isotype</b>	IgG
<b>Recommend Usage</b>	Western Blot (1:1000-5000) The optimal working dilution should be determined by the end user.
<b>Storage Buffer</b>	In PBS, 150 mM NaCl, pH 7.4 (50% glycerol, 0.02% sodium azide).

**Storage Instruction**

Store at 4°C. For long term storage store at -20°C.  
Aliquot to avoid repeated freezing and thawing.

**Note**

This product contains sodium azide: a POISONOUS AND HAZARDOUS SUBSTANCE which should be handled by trained staff only.

## Applications

- Western Blot

Western Blot analysis of (1) HeLa cell lysate, (2) C6 cell lysate.

## Gene Info — KPNA2

**Entrez GeneID**[3838](#)**Protein Accession#**[P52292](#)**Gene Name**

KPNA2

**Gene Alias**

IPOA1, QIP2, RCH1, SRP1alpha

**Gene Description**

karyopherin alpha 2 (RAG cohort 1, importin alpha 1)

**Omim ID**[600685](#)**Gene Ontology**[Hyperlink](#)**Gene Summary**

The import of proteins into the nucleus is a process that involves at least 2 steps. The first is an energy-independent docking of the protein to the nuclear envelope and the second is an energy-dependent translocation through the nuclear pore complex. Imported proteins require a nuclear localization sequence (NLS) which generally consists of a short region of basic amino acids or 2 such regions spaced about 10 amino acids apart. Proteins involved in the first step of nuclear import have been identified in different systems. These include the Xenopus protein importin and its yeast homolog, SRP1 (a suppressor of certain temperature-sensitive mutations of RNA polymerase I in *Saccharomyces cerevisiae*), which bind to the NLS. KPNA2 protein interacts with the NLSs of DNA helicase Q1 and SV40 T antigen and may be involved in the nuclear transport of proteins. KPNA2 also may play a role in V(D)J recombination [provided by RefSeq]

**Other Designations**

RAG cohort 1|importin alpha 1|importin alpha 2|importin-alpha-P1|karyopherin alpha 2|pendulin

## Disease

- [Breast Neoplasms](#)

- [Genetic Predisposition to Disease](#)
- [Ovarian Neoplasms](#)