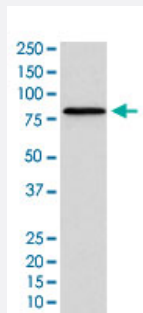


# GSN monoclonal antibody, clone AEHE-7

Catalog # MAB22105      Size 100 uL

## Applications



### Western Blot (Cell lysate)

Western Blot (cell lysate) analysis of A-431 cell lysate.

## Specification

<b>Product Description</b>	Rabbit monoclonal antibody raised against synthetic protein of human GSN.
<b>Immunogen</b>	A synthetic peptide corresponding to human GSN.
<b>Host</b>	Rabbit
<b>Reactivity</b>	Human, Mouse
<b>Specificity</b>	This antibody reacts with human, mouse GSN, in native form and recombinant. Superfamily member s of GSN are not reactive to antibody.
<b>Form</b>	Liquid
<b>Purification</b>	Affinity purification
<b>Isotype</b>	IgG
<b>Recommend Usage</b>	Flow Cytometry (1:50) Immunohistochemistry (Formalin/PFA-fixed paraffin-embedded sections) (1:50-200) Immunofluorescence (1:50-200) Immunocytochemistry (1:50-200) Western Blot (1:1000-5000) The optimal working dilution should be determined by the end user.

<b>Storage Buffer</b>	In PBS, 150 mM NaCl, pH 7.4 (50% glycerol, 0.02% sodium azide).
<b>Storage Instruction</b>	Store at 4°C. For long term storage store at -20°C. Aliquot to avoid repeated freezing and thawing.
<b>Note</b>	This product contains sodium azide: a POISONOUS AND HAZARDOUS SUBSTANCE which should be handled by trained staff only.

## Applications

- Western Blot (Cell lysate)

Western Blot (cell lysate) analysis of A-431 cell lysate.

- Immunohistochemistry (Formalin/PFA-fixed paraffin-embedded sections)

- Immunocytochemistry

- Immunofluorescence

- Flow Cytometry

## Gene Info — GSN

<b>Entrez GeneID</b>	<a href="#">2934</a>
<b>Protein Accession#</b>	<a href="#">P06396</a>
<b>Gene Name</b>	GSN
<b>Gene Alias</b>	DKFZp313L0718
<b>Gene Description</b>	gelsolin (amyloidosis, Finnish type)
<b>Omim ID</b>	<a href="#">105120</a> <a href="#">137350</a>
<b>Gene Ontology</b>	<a href="#">Hyperlink</a>
<b>Gene Summary</b>	The protein encoded by this gene binds to the "plus" ends of actin monomers and filaments to prevent monomer exchange. The encoded calcium-regulated protein functions in both assembly and disassembly of actin filaments. Defects in this gene are a cause of familial amyloidosis Finnish type (FAF). Multiple transcript variants encoding several different isoforms have been found for this gene. [provided by RefSeq]
<b>Other Designations</b>	OTTHUMP00000022011 OTTHUMP00000162202 gelsolin

## Pathway

- [Fc gamma R-mediated phagocytosis](#)
- [Regulation of actin cytoskeleton](#)

## Disease

- [Tobacco Use Disorder](#)