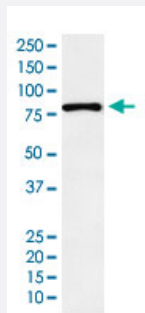


EGR1 monoclonal antibody, clone ADHF-5

Catalog # MAB22073 Size 100 uL

Applications



Western Blot (Cell lysate)

Western Blot (cell lysate) analysis of 293T cell lysate.

Specification

Product Description	Rabbit monoclonal antibody raised against synthetic protein of human EGR1.
Immunogen	A synthetic peptide corresponding to human EGR1.
Host	Rabbit
Reactivity	Human
Specificity	This antibody reacts with human EGR1, in native form and recombinant. Superfamily members of EGR1 are not reactive to antibody.
Form	Liquid
Purification	Affinity purification
Isotype	IgG
Recommend Usage	Immunohistochemistry (Formalin/PFA-fixed paraffin-embedded sections) (1:50-200) Immunofluorescence (1:50-200) Immunocytochemistry (1:50-200) Western Blot (1:1000-5000) The optimal working dilution should be determined by the end user.

Storage Buffer	In PBS, 150 mM NaCl, pH 7.4 (50% glycerol, 0.02% sodium azide).
Storage Instruction	Store at 4°C. For long term storage store at -20°C. Aliquot to avoid repeated freezing and thawing.
Note	This product contains sodium azide: a POISONOUS AND HAZARDOUS SUBSTANCE which should be handled by trained staff only.

Applications

- Western Blot (Cell lysate)

Western Blot (cell lysate) analysis of 293T cell lysate.

- Immunohistochemistry (Formalin/PFA-fixed paraffin-embedded sections)
- Immunocytochemistry
- Immunofluorescence

Gene Info — EGR1

Entrez GeneID	1958
Protein Accession#	P18146
Gene Name	EGR1
Gene Alias	AT225, G0S30, KROX-24, NGFI-A, TIS8, ZIF-268, ZNF225
Gene Description	early growth response 1
Omim ID	128990
Gene Ontology	Hyperlink
Gene Summary	The protein encoded by this gene belongs to the EGR family of C2H2-type zinc-finger proteins. It is a nuclear protein and functions as a transcriptional regulator. The products of target genes it activates are required for differentiation and mitogenesis. Studies suggest this is a cancer suppressor gene. [provided by RefSeq]
Other Designations	early growth response protein 1 nerve growth factor-induced protein A transcription factor ETR103 zinc finger protein 225

Pathway

- [Prion diseases](#)

Disease

- [Asthma](#)
- [Genetic Predisposition to Disease](#)
- [Myopia](#)
- [Rhinitis](#)
- [Schizophrenia](#)