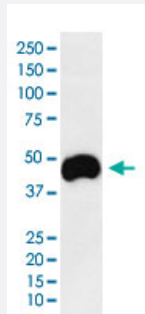


# CD2 monoclonal antibody, clone AFBD-3

Catalog # MAB22063      Size 100 uL

## Applications



### Western Blot (Cell lysate)

Western Blot (cell lysate) analysis of Jurkat cell lysate.

## Specification

<b>Product Description</b>	Rabbit monoclonal antibody raised against synthetic protein of human CD2.
<b>Immunogen</b>	A synthetic peptide corresponding to human CD2.
<b>Host</b>	Rabbit
<b>Reactivity</b>	Human
<b>Specificity</b>	This antibody reacts with human CD2, in native form and recombinant. Superfamily members of CD2 are not reactive to antibody.
<b>Form</b>	Liquid
<b>Purification</b>	Affinity purification
<b>Isotype</b>	IgG

<b>Recommend Usage</b>	Flow Cytometry (1:30) Immunohistochemistry (Formalin/PFA-fixed paraffin-embedded sections) (1:50-200) Immunofluorescence (1:50-200) Immunocytochemistry (1:50-200) Immunoprecipitation (1:50) Western Blot (1:500-2000) The optimal working dilution should be determined by the end user.
<b>Storage Buffer</b>	In PBS, 150 mM NaCl, pH 7.4 (50% glycerol, 0.02% sodium azide).
<b>Storage Instruction</b>	Store at 4°C. For long term storage store at -20°C. Aliquot to avoid repeated freezing and thawing.
<b>Note</b>	This product contains sodium azide: a POISONOUS AND HAZARDOUS SUBSTANCE which should be handled by trained staff only.

## Applications

- Western Blot (Cell lysate)  
Western Blot (cell lysate) analysis of Jurkat cell lysate.
- Immunohistochemistry (Formalin/PFA-fixed paraffin-embedded sections)
- Immunocytochemistry
- Immunofluorescence
- Immunoprecipitation
- Flow Cytometry

## Gene Info — CD2

<b>Entrez GeneID</b>	<a href="#">914</a>
<b>Protein Accession#</b>	<a href="#">P06729</a>
<b>Gene Name</b>	CD2
<b>Gene Alias</b>	SRBC, T11
<b>Gene Description</b>	CD2 molecule

Omim ID	<a href="#">186990</a>
Gene Ontology	<a href="#">Hyperlink</a>
Gene Summary	sheep red blood cell receptor OTTHUMP00000024366 OTTHUMP00000059318 lymphocyte-function antigen-2
Other Designations	CD2 antigen (p50), sheep red blood cell receptor OTTHUMP00000024366 OTTHUMP00000059318 lymphocyte-function antigen-2

## Pathway

- [Cell adhesion molecules \(CAMs\)](#)
- [Hematopoietic cell lineage](#)

## Disease

- [Arthritis](#)
- [Genetic Predisposition to Disease](#)