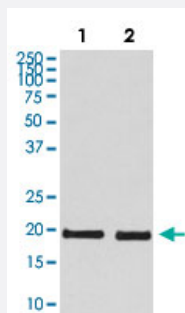


SKP1 monoclonal antibody, clone ADDF-19

Catalog # MAB22047 Size 100 uL

Applications



Western Blot

Western Blot analysis of (1) 293T, (2) NIH/3T3 cell lysates.

Specification

Product Description	Rabbit monoclonal antibody raised against synthetic protein of human SKP1.
Immunogen	A synthetic peptide corresponding to human SKP1.
Host	Rabbit
Reactivity	Human, Mouse, Rat
Specificity	This antibody reacts with human, mouse, rat SKP1, in native form and recombinant. Superfamily members of SKP1 are not reactive to antibody.
Form	Liquid
Purification	Affinity purification
Isotype	IgG
Recommend Usage	Flow Cytometry (1:100) Immunofluorescence (1:50-200) Immunocytochemistry (1:50-200) Western Blot (1:500-2000) The optimal working dilution should be determined by the end user.

Storage Buffer	In PBS, 150 mM NaCl, pH 7.4 (50% glycerol, 0.02% sodium azide).
Storage Instruction	Store at 4°C. For long term storage store at -20°C. Aliquot to avoid repeated freezing and thawing.
Note	This product contains sodium azide: a POISONOUS AND HAZARDOUS SUBSTANCE which should be handled by trained staff only.

Applications

- Western Blot

Western Blot analysis of (1) 293T, (2) NIH/3T3 cell lysates.

- Immunocytochemistry

- Immunofluorescence

- Flow Cytometry

Gene Info — SKP1

Entrez GeneID	6500
Protein Accession#	P63208
Gene Name	SKP1
Gene Alias	EMC19, MGC34403, OCP-II, OCP2, SKP1A, TCEB1L, p19A
Gene Description	S-phase kinase-associated protein 1
Omim ID	601434
Gene Ontology	Hyperlink

Gene Summary	This gene encodes a component of SCF complexes, which are composed of this protein, cullin 1, a ring-box protein, and one member of the F-box family of proteins. This protein binds directly to the F-box motif found in F-box proteins. SCF complexes are involved in the regulated ubiquitination of specific protein substrates, which targets them for degradation by the proteasome. Specific F-box proteins recognize different target protein(s), and many specific SCF substrates have been identified including regulators of cell cycle progression and development. Studies have also characterized the protein as an RNA polymerase II elongation factor. Alternative splicing of this gene results in two transcript variants. A related pseudogene has been identified on chromosome 7. [provided by RefSeq]
--------------	---

Other Designations

RNA polymerase II elongation factor-like protein OCP2|cyclin A/CDK2-associated p19|organ of Corti protein 2|transcription elongation factor B (SIII), polypeptide 1-like

Pathway

- [Cell cycle](#)
- [TGF-beta signaling pathway](#)
- [Ubiquitin mediated proteolysis](#)
- [Wnt signaling pathway](#)

Disease

- [Tobacco Use Disorder](#)