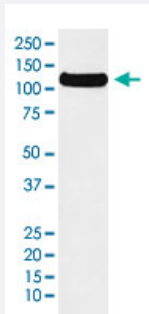


DDB1 monoclonal antibody, clone AFAH-4

Catalog # MAB22019 Size 100 uL

Applications



Western Blot

Western Blot analysis of DDB1.

Specification

Product Description Rabbit monoclonal antibody raised against synthetic protein of human DDB1.

Immunogen A synthetic peptide corresponding to human DDB1.

Host Rabbit

Reactivity Human, Mouse, Rat

Form Liquid

Purification Affinity purification

Isotype IgG

Recommend Usage
 Immunoprecipitation (1:50)
 Immunocytochemistry (1:50-200)
 Immunofluorescence (1:50-200)
 Western Blot (1:1000-5000)
 The optimal working dilution should be determined by the end user.

Storage Buffer In PBS, 150 mM NaCl, pH 7.4 (50% glycerol, 0.02% sodium azide).

Storage Instruction

Store at 4°C. For long term storage store at -20°C.
Aliquot to avoid repeated freezing and thawing.

Note

This product contains sodium azide: a POISONOUS AND HAZARDOUS SUBSTANCE which should be handled by trained staff only.

Applications

- Western Blot

Western Blot analysis of DDB1.

- Immunocytochemistry

- Immunofluorescence

- Immunoprecipitation

Gene Info — DDB1

Entrez GeneID[1642](#)**Protein Accession#**[Q16531](#)**Gene Name**

DDB1

Gene Alias

DDBA, UV-DDB1, XAP1, XPCE, XPE, XPE-BF

Gene Description

damage-specific DNA binding protein 1, 127kDa

Omim ID[600045](#)**Gene Ontology**[Hyperlink](#)**Gene Summary**

This gene encodes the large subunit of DNA damage-binding protein which is a heterodimer composed of a large and a small subunit. This protein functions in nucleotide-excision repair. Its defective activity causes the repair defect in the patients with xeroderma pigmentosum complementation group E (XPE). However, it remains for mutation analysis to demonstrate whether the defect in XPE patients is in this gene or the gene encoding the small subunit. In addition, Best vitelliform macular dystrophy is mapped to the same region as this gene on 11q, but no sequence alterations of this gene are demonstrated in Best disease patients. [provided by RefSeq]

Other Designations

DDB p127 subunit|damage-specific DNA binding protein 1|damage-specific DNA binding protein 1 (127kD)

Pathway

- [Nucleotide excision repair](#)
- [Ubiquitin mediated proteolysis](#)