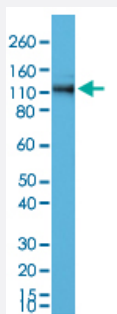


RecomAb™

# CTNND1 monoclonal antibody, clone RM353

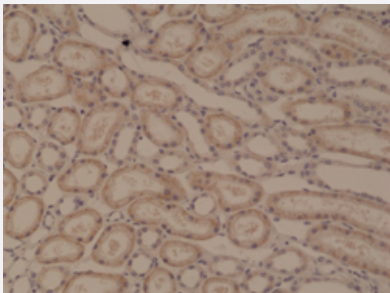
Catalog # MAB21990      Size 100 uL

## Applications



### Western Blot (Cell lysate)

Western Blot (Cell lysate) analysis of A431 cell lysates.



### Immunohistochemistry (Formalin/PFA-fixed paraffin-embedded sections)

Immunohistochemical staining of human kidney.

## Specification

<b>Product Description</b>	Rabbit recombinant monoclonal antibody raised against human CTNND1.
<b>Antibody Species</b>	Rabbit
<b>Immunogen</b>	Original antibody is raised against a synthetic peptide corresponding to C-terminus of human CTNN D1.
<b>Reactivity</b>	Human
<b>Specificity</b>	This antibody reacts to human p120 catenin (Catenin delta-1).
<b>Form</b>	Liquid

Purification	Protein A purification
Isotype	IgG
Recommend Usage	Immunohistochemistry (Formalin/PFA-fixed paraffin-embedded sections) (1:1000-5000) Western Blot (1:500-1000) The optimal working dilution should be determined by the end user.
Storage Buffer	In PBS (50% glycerol, 1% BSA, 0.09% sodium azide)
Storage Instruction	Store at -20°C. Aliquot to avoid repeated freezing and thawing.
Note	This product contains sodium azide: a POISONOUS AND HAZARDOUS SUBSTANCE which should be handled by trained staff only.

## Applications

- Western Blot (Cell lysate)

Western Blot (Cell lysate) analysis of A431 cell lysates.

- Immunohistochemistry (Formalin/PFA-fixed paraffin-embedded sections)

Immunohistochemical staining of human kidney.

## Gene Info — CTNND1

Entrez GeneID	<a href="#">1500</a>
Gene Name	CTNND1
Gene Alias	CAS, CTNND, KIAA0384, P120CAS, P120CTN, p120
Gene Description	catenin (cadherin-associated protein), delta 1
Omim ID	<a href="#">601045</a>
Gene Ontology	<a href="#">Hyperlink</a>
Gene Summary	This gene encodes a member of the Armadillo protein family, which function in adhesion between cells and signal transduction. Multiple translation initiation codons and alternative splicing result in many different isoforms being translated. Not all of the full-length nature of the described transcript variants have been determined. [provided by RefSeq]
Other Designations	catenin, delta 1

## Pathway

- [Adherens junction](#)
- [Leukocyte transendothelial migration](#)