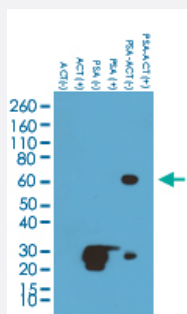


RecomAb™

# KLK3 monoclonal antibody, clone RM323

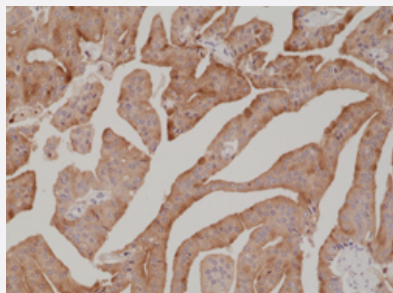
Catalog # MAB21979      Size 100 uL

## Applications



### Western Blot

Western Blot analysis of PSA (purified from human seminal fluid), ACT (alpha 1-antichymotrypsin, from human plasma), and PSA-ACT complex, under non reduced (-) or reduced (+) conditions.



### Immunohistochemistry (Formalin/PFA-fixed paraffin-embedded sections)

Immunohistochemical staining of human prostate cancer.

### Enzyme-linked Immunoabsorbent Assay

A titer ELISA of PSA (purified from human seminal fluid). The plate was coated with different amounts of PSA. A serial dilution of KLK3 monoclonal antibody, clone RM323 (Cat# MAB21979) was used as the primary antibody. An alkaline phosphatase conjugated anti-rabbit IgG as the secondary antibody.

## Specification

### Product Description

Rabbit recombinant monoclonal antibody raised against human KLK3.

Antibody Species	Rabbit
Immunogen	Original antibody is raised against native purified KLK3 from human seminal fluid.
Reactivity	Human
Specificity	This antibody reacts to native human PSA (Prostate Specific Antigen), including both free (unbound) form and in a complex with ACT (alpha 1-antichymotrypsin). It may react to reduced PSA at a higher concentration.
Form	Liquid
Purification	Protein A purification
Isotype	IgG
Recommend Usage	ELISA (1:1000-5000) Immunohistochemistry (Formalin/PFA-fixed paraffin-embedded sections) (1:500-1000) Western Blot (1:1000-2500) The optimal working dilution should be determined by the end user.
Storage Buffer	In PBS (50% glycerol, 1% BSA, 0.09% sodium azide)
Storage Instruction	Store at -20°C. Aliquot to avoid repeated freezing and thawing.
Note	This product contains sodium azide: a POISONOUS AND HAZARDOUS SUBSTANCE which should be handled by trained staff only.

## Applications

- Western Blot

Western Blot analysis of PSA (purified from human seminal fluid), ACT (alpha 1-antichymotrypsin, from human plasma), and PSA-ACT complex, under non reduced (-) or reduced (+) conditions.

- Immunohistochemistry (Formalin/PFA-fixed paraffin-embedded sections)

Immunohistochemical staining of human prostate cancer.

- Enzyme-linked Immunoabsorbent Assay

- Enzyme-linked Immunoabsorbent Assay

A titer ELISA of PSA (purified from human seminal fluid). The plate was coated with different amounts of PSA. A serial dilution of KLK3 monoclonal antibody, clone RM323 (Cat# MAB21979) was used as the primary antibody. An alkaline phosphatase conjugated anti-rabbit IgG as the secondary antibody.

## Gene Info — KLK3

Entrez GeneID	<a href="#">354</a>
Gene Name	KLK3
Gene Alias	APS, KLK2A1, PSA, hK3
Gene Description	kallikrein-related peptidase 3
Omim ID	<a href="#">176820</a>
Gene Ontology	<a href="#">Hyperlink</a>
Gene Summary	Kallikreins are a subgroup of serine proteases having diverse physiological functions. Growing evidence suggests that many kallikreins are implicated in carcinogenesis and some have potential as novel cancer and other disease biomarkers. This gene is one of the fifteen kallikrein subfamily members located in a cluster on chromosome 19. Its protein product is a protease present in seminal plasma. It is thought to function normally in the liquefaction of seminal coagulum, presumably by hydrolysis of the high molecular mass seminal vesicle protein. Serum level of this protein, called PSA in the clinical setting, is useful in the diagnosis and monitoring of prostatic carcinoma. Alternate splicing of this gene generates several transcript variants encoding different isoforms. [provided by RefSeq]
Other Designations	P-30 antigen gamma-seminoprotein kallikrein 3, (prostate specific antigen) prostate specific antigen semenogelase seminin

## Pathway

- [Pathways in cancer](#)
- [Prostate cancer](#)

## Disease

- [Breast cancer](#)
- [Breast Neoplasms](#)
- [Cardiovascular Diseases](#)
- [Diabetes Mellitus](#)
- [Disease Progression](#)

- [Edema](#)
- [Genetic Predisposition to Disease](#)
- [Lymphatic Metastasis](#)
- [Neoplasm Invasiveness](#)
- [Neoplasm Metastasis](#)
- [Neoplasm Recurrence](#)
- [Neoplasms](#)
- [Prostate cancer](#)
- [Prostatic Hyperplasia](#)
- [Prostatic Neoplasms](#)