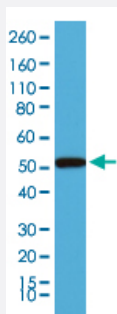


RecomAb™

## KRT14 monoclonal antibody, clone RM328

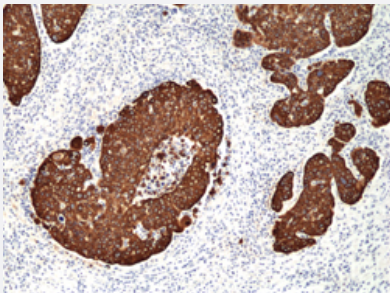
Catalog # MAB21972      Size 100 uL

### Applications



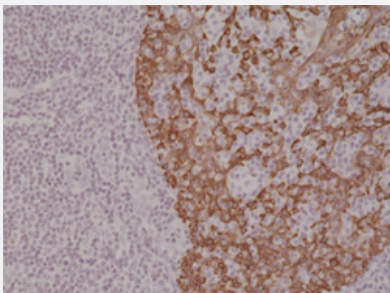
#### Western Blot (Cell lysate)

Western Blot (Cell lysate) analysis of A431 cell lysate.



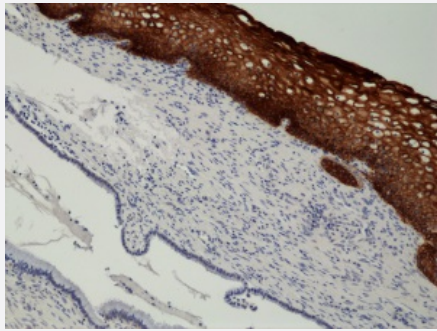
#### Immunohistochemistry (Formalin/PFA-fixed paraffin-embedded sections)

Immunohistochemical staining of human cervical squamous cell carcinoma.



#### Immunohistochemistry (Formalin/PFA-fixed paraffin-embedded sections)

Immunohistochemical staining of human tonsil.



## Immunohistochemistry

Immunohistochemical staining of formalin fixed and paraffin embedded human Cervix tissue section using KRT 14 monoclonal antibody, clone RM328 (Cat# MAB21972) at a 1:2000 dilution.

## Specification

<b>Product Description</b>	Rabbit recombinant monoclonal antibody raised against human KRT14.
<b>Antibody Species</b>	Rabbit
<b>Immunogen</b>	Original antibody is raised against a synthetic peptide corresponding to C-terminus of human KRT14.
<b>Reactivity</b>	Human
<b>Specificity</b>	This antibody reacts to human Cytokeratin-14. It may also react to mouse or rat Cytokeratin-14, as predicted by immunogen homology.
<b>Form</b>	Liquid
<b>Purification</b>	Protein A purification
<b>Isotype</b>	IgG
<b>Recommend Usage</b>	Immunohistochemistry (Formalin/PFA-fixed paraffin-embedded sections) (1:1000-2000) Western Blot (1:1000-2000) The optimal working dilution should be determined by the end user.
<b>Storage Buffer</b>	In PBS (50% glycerol, 1% BSA, 0.09% sodium azide)
<b>Storage Instruction</b>	Store at -20°C. Aliquot to avoid repeated freezing and thawing.
<b>Note</b>	This product contains sodium azide: a POISONOUS AND HAZARDOUS SUBSTANCE which should be handled by trained staff only.

## Applications

- Western Blot (Cell lysate)

Western Blot (Cell lysate) analysis of A431 cell lysate.

- Immunohistochemistry (Formalin/PFA-fixed paraffin-embedded sections)

Immunohistochemical staining of human cervical squamous cell carcinoma.

- Immunohistochemistry (Formalin/PFA-fixed paraffin-embedded sections)

Immunohistochemical staining of human tonsil.

- Immunohistochemistry

Immunohistochemical staining of formalin fixed and paraffin embedded human Cervix tissue section using KRT14 monoclonal antibody, clone RM328 (Cat# MAB21972) at a 1:2000 dilution.

## Gene Info — KRT14

**Entrez GeneID** [3861](#)

**Gene Name** KRT14

**Gene Alias** CK14, EBS3, EBS4, K14, NFJ

**Gene Description** keratin 14

**Omim ID** [125595](#) [131800](#) [148066](#) [161000](#) [601001](#)

**Gene Ontology** [Hyperlink](#)

**Gene Summary** This gene encodes a member of the keratin family, the most diverse group of intermediate filaments. This gene product, a type I keratin, is usually found as a heterotetramer with two keratin 5 molecules, a type II keratin. Together they form the cytoskeleton of epithelial cells. Mutations in the genes for these keratins are associated with epidermolysis bullosa simplex. At least one pseudogene has been identified at 17p12-p11. [provided by RefSeq]

**Other Designations** cytokeratin 14|keratin 14 (epidermolysis bullosa simplex, Dowling-Meara, Koebner)

## Disease

- [Cleft Lip](#)

- [Cleft Palate](#)