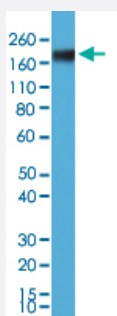


RecomAb™

CEACAM5 monoclonal antibody, clone RM326

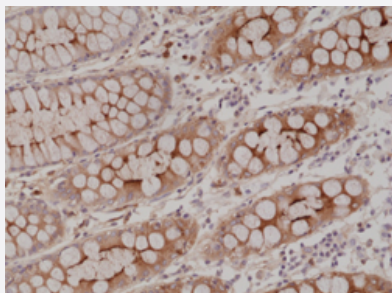
Catalog # MAB21970 Size 100 uL

Applications



Western Blot (Cell lysate)

Western Blot (Cell lysate) analysis of MCF-7 cell lysate.



Immunohistochemistry (Formalin/PFA-fixed paraffin-embedded sections)

Immunohistochemical staining of human colon.

Specification

Product Description	Rabbit recombinant monoclonal antibody raised against human CEACAM5.
Antibody Species	Rabbit
Immunogen	Original antibody is raised against native purified CEACAM5 from human liver tissue.
Reactivity	Human
Specificity	This antibody reacts to human CEA (Carcinoembryonic Antigen) (CD66e).
Form	Liquid

Purification	Protein A purification
Isotype	IgG
Recommend Usage	ELISA (1:1000-5000) Immunohistochemistry (Formalin/PFA-fixed paraffin-embedded sections) (1:1000-2000) Western Blot (1:1000-2000) The optimal working dilution should be determined by the end user.
Storage Buffer	In PBS (50% glycerol, 1% BSA, 0.09% sodium azide)
Storage Instruction	Store at -20°C. Aliquot to avoid repeated freezing and thawing.
Note	This product contains sodium azide: a POISONOUS AND HAZARDOUS SUBSTANCE which should be handled by trained staff only.

Applications

- Western Blot (Cell lysate)
Western Blot (Cell lysate) analysis of MCF-7 cell lysate.
- Immunohistochemistry (Formalin/PFA-fixed paraffin-embedded sections)
Immunohistochemical staining of human colon.
- Enzyme-linked Immunoabsorbent Assay

Gene Info — CEACAM5

Entrez GeneID	1048
Gene Name	CEACAM5
Gene Alias	CD66e, CEA, DKFZp781M2392
Gene Description	carcinoembryonic antigen-related cell adhesion molecule 5
Omim ID	114890
Gene Ontology	Hyperlink
Other Designations	-