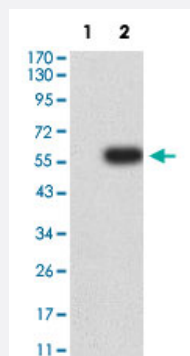


SETD7 monoclonal antibody, clone 1B3B8

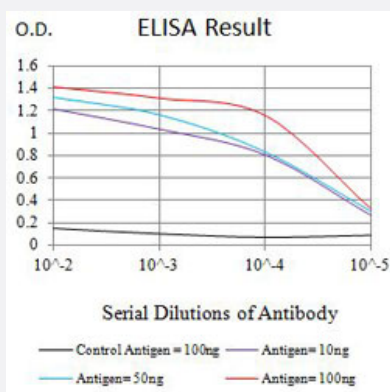
Catalog # MAB21503 Size 100 ug

Applications



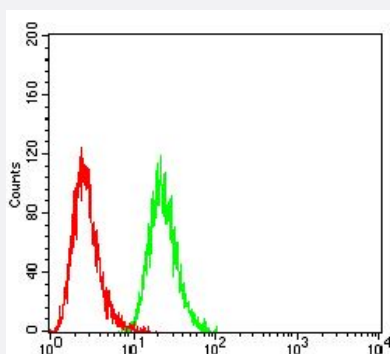
Western Blot (Transfected lysate)

Western Blot analysis of Lane 1: HEK293 and Lane 2: SETD7-hlgGFc transfected HEK293 cell lysates with SETD7 monoclonal antibody, clone 1B3B8 (Cat # MAB21503).



Enzyme-linked Immunoabsorbent Assay

ELISA analysis with SETD7 monoclonal antibody, clone 1B3B8 (Cat # MAB21503).



Flow Cytometry

Flow cytometric analysis of HeLa cells with SETD7 monoclonal antibody, clone 1B3B8 (Cat # MAB21503) (Green). Red: Negative Control.

Specification

Product Description	Mouse monoclonal antibody raised against partial recombinant human SETD7.
Immunogen	Recombinant protein corresponding to amino acids 107-366 of human SETD7.
Host	Mouse
Theoretical MW (kDa)	40.7
Reactivity	Human
Form	Liquid
Isotype	IgG2a
Recommend Usage	ELISA (1:10000) Flow Cytometry (1:200-1:400) Western Blot (1:500-1:2000) The optimal working dilution should be determined by the end user.
Storage Buffer	In PBS (0.05% sodium azide).
Storage Instruction	Store at 4°C. For long term storage store at -20°C. Aliquot to avoid repeated freezing and thawing.
Note	This product contains sodium azide: a POISONOUS AND HAZARDOUS SUBSTANCE which should be handled by trained staff only.

Applications

- Western Blot (Transfected lysate)

Western Blot analysis of Lane 1: HEK293 and Lane 2: SETD7-hlgGfc transfected HEK293 cell lysates with SETD7 monoclonal antibody, clone 1B3B8 (Cat # MAB21503).

- Enzyme-linked Immunoabsorbent Assay

ELISA analysis with SETD7 monoclonal antibody, clone 1B3B8 (Cat # MAB21503).

- Flow Cytometry

Flow cytometric analysis of HeLa cells with SETD7 monoclonal antibody, clone 1B3B8 (Cat # MAB21503) (Green). Red: Negative Control.

Gene Info — SETD7

Entrez GeneID [80854](#)

Protein Accession# [Q8WTS6](#)

Gene Name	SETD7
Gene Alias	FLJ21193, KIAA1717, KMT7, SET7, SET7/9, SET9
Gene Description	SET domain containing (lysine methyltransferase) 7
Omim ID	606594
Gene Ontology	Hyperlink
Other Designations	H3-K4-HMTase SET domain-containing protein 7 histone H3-K4 methyltransferase histone H3-lysine 4-specific methyltransferase

Pathway

- [Lysine degradation](#)

Disease

- [Tobacco Use Disorder](#)