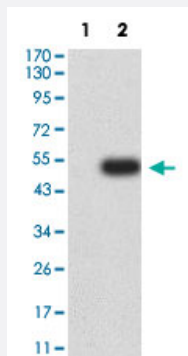


FCRL1 monoclonal antibody, clone 4E9B9

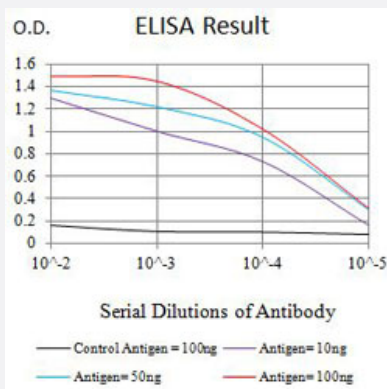
Catalog # MAB21472 Size 100 ug

Applications



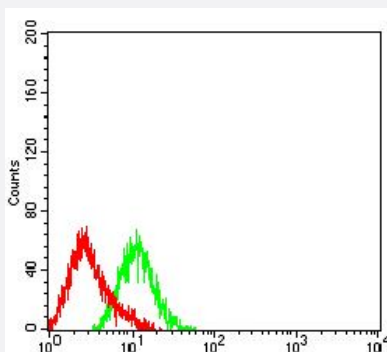
Western Blot (Transfected lysate)

Western Blot analysis of Lane 1: HEK293 and Lane 2: FCRL1-hlgGfC transfected HEK293 cell lysates with FCRL1 monoclonal antibody, clone 4E9B9 (Cat # MAB21472).



Enzyme-linked Immunoabsorbent Assay

ELISA analysis with FCRL1 monoclonal antibody, clone 4E9B9 (Cat # MAB21472).



Flow Cytometry

Flow cytometric analysis of HL-60 cells with FCRL1 monoclonal antibody, clone 4E9B9 (Cat # MAB21472) (Green). Red: Negative Control.

Specification

Product Description	Mouse monoclonal antibody raised against partial recombinant human FCRL1.
Immunogen	Recombinant protein corresponding to amino acids 17-202 of human FCRL1.
Host	Mouse
Theoretical MW (kDa)	47
Reactivity	Human
Form	Liquid
Isotype	IgG1
Recommend Usage	ELISA (1:10000) Flow Cytometry (1:200-1:400) Western Blot (1:500-1:2000) The optimal working dilution should be determined by the end user.
Storage Buffer	In PBS (0.05% sodium azide).
Storage Instruction	Store at 4°C. For long term storage store at -20°C. Aliquot to avoid repeated freezing and thawing.
Note	This product contains sodium azide: a POISONOUS AND HAZARDOUS SUBSTANCE which should be handled by trained staff only.

Applications

- Western Blot (Transfected lysate)

Western Blot analysis of Lane 1: HEK293 and Lane 2: FCRL1-hlgGFc transfected HEK293 cell lysates with FCRL1 monoclonal antibody, clone 4E9B9 (Cat # MAB21472).

- Enzyme-linked Immunoabsorbent Assay

ELISA analysis with FCRL1 monoclonal antibody, clone 4E9B9 (Cat # MAB21472).

- Flow Cytometry

Flow cytometric analysis of HL-60 cells with FCRL1 monoclonal antibody, clone 4E9B9 (Cat # MAB21472) (Green). Red: Negative Control.

Gene Info — FCRL1

Entrez GeneID [115350](#)

Protein Accession# [Q96LA6](#)

Gene Name	FCRL1
Gene Alias	DKFZp667O1421, FCRH1, IFGP1, IRTA5, RP11-367J7.7
Gene Description	Fc receptor-like 1
Omim ID	606508
Gene Ontology	Hyperlink
Gene Summary	<p>This gene encodes a member of the immunoglobulin receptor superfamily and is one of several Fc receptor-like glycoproteins clustered on the long arm of chromosome 1. The encoded protein contains three extracellular C2-like immunoglobulin domains, a transmembrane domain and a cytoplasmic domain with two immunoreceptor-tyrosine activation motifs. This protein may play a role in the regulation of cancer cell growth. Alternative splicing results in multiple transcript variants. [provided by RefSeq]</p>
Other Designations	Fc receptor-like protein 1 (FCRH1) OTTHUMP00000020924

Disease

- [Tobacco Use Disorder](#)