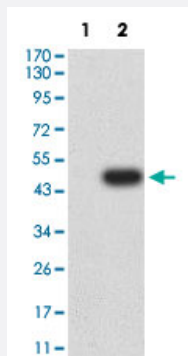


BCAM monoclonal antibody, clone 8C4E6

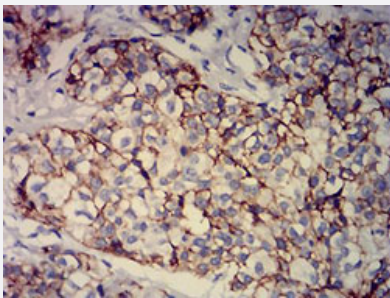
Catalog # MAB21449 Size 100 ug

Applications



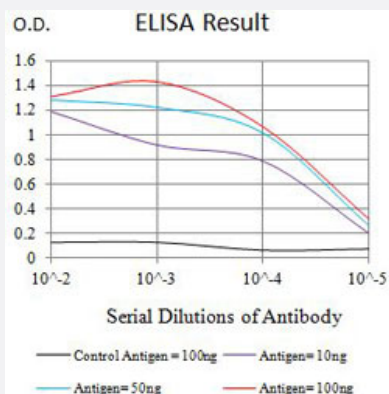
Western Blot (Transfected lysate)

Western Blot analysis of Lane 1: HEK293 and Lane 2: BCAM-hlgGFc transfected HEK293 cell lysates with BCAM monoclonal antibody, clone 8C4E6 (Cat # MAB21449).



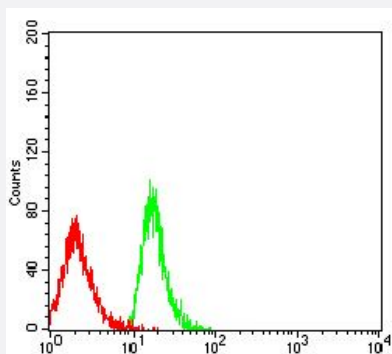
Immunohistochemistry (Formalin/PFA-fixed paraffin-embedded sections)

Immunohistochemical staining (Formalin-fixed paraffin-embedded sections) of human bladder carcinoma with BCAM monoclonal antibody, clone 8C4E6 (Cat # MAB21449).



Enzyme-linked Immunoabsorbent Assay

ELISA analysis with BCAM monoclonal antibody, clone 8C4E6 (Cat # MAB21449).



Flow Cytometry

Flow cytometric analysis of MOLT4 cells with BCAM monoclonal antibody, clone 8C4E6 (Cat # MAB21449) (Green). Red: Negative Control.

Specification

| | |
|-----------------------------|---|
| Product Description | Mouse monoclonal antibody raised against partial recombinant human BCAM. |
| Immunogen | Recombinant protein corresponding to amino acids 32-197 of human BCAM. |
| Host | Mouse |
| Theoretical MW (kDa) | 67.4 |
| Reactivity | Human |
| Form | Liquid |
| Isotype | IgG2a |
| Recommend Usage | ELISA (1:10000) Flow Cytometry (1:200-1:400) Immunohistochemistry (Formalin/PFA-fixed paraffin-embedded sections) (1:200-1:1000) Western Blot (1:500-1:2000) The optimal working dilution should be determined by the end user. |
| Storage Buffer | In PBS (0.05% sodium azide). |
| Storage Instruction | Store at 4°C. For long term storage store at -20°C. Aliquot to avoid repeated freezing and thawing. |
| Note | This product contains sodium azide: a POISONOUS AND HAZARDOUS SUBSTANCE which should be handled by trained staff only. |

Applications

- Western Blot (Transfected lysate)

Western Blot analysis of Lane 1: HEK293 and Lane 2: BCAM-hlgGFc transfected HEK293 cell lysates with BCAM monoclonal antibody, clone 8C4E6 (Cat # MAB21449).

- Immunohistochemistry (Formalin/PFA-fixed paraffin-embedded sections)

Immunohistochemical staining (Formalin-fixed paraffin-embedded sections) of human bladder carcinoma with BCAM monoclonal antibody, clone 8C4E6 (Cat # MAB21449).

- Enzyme-linked Immunoabsorbent Assay

ELISA analysis with BCAM monoclonal antibody, clone 8C4E6 (Cat # MAB21449).

- Flow Cytometry

Flow cytometric analysis of MOLT4 cells with BCAM monoclonal antibody, clone 8C4E6 (Cat # MAB21449) (Green). Red: Negative Control.

Gene Info — BCAM

Entrez GeneID [4059](#)

Protein Accession# [P50895](#)

Gene Name BCAM

Gene Alias AU, CD239, LU, MSK19

Gene Description basal cell adhesion molecule (Lutheran blood group)

Omim ID [111200](#)

Gene Ontology [Hyperlink](#)

Gene Summary Lutheran blood group glycoprotein is a member of the immunoglobulin superfamily and a receptor for the extracellular matrix protein, laminin. The protein contains five, N-terminus, extracellular immunoglobulin domains, a single transmembrane domain, and a short, C-terminal cytoplasmic tail. This protein may play a role in epithelial cell cancer and in vaso-occlusion of red blood cells in sickle cell disease. Two transcript variants encoding different isoforms have been found for this gene. [provided by RefSeq]

Other Designations Auberger b antigen|B-CAM cell surface glycoprotein|B-cell adhesion molecule|F8/G253 antigen|Lutheran blood group (Auberger b antigen included)|antigen identified by monoclonal antibody F8|basal cell adhesion molecule|basal cell adhesion molecule (Lu and A

Disease

- [Cardiovascular Diseases](#)