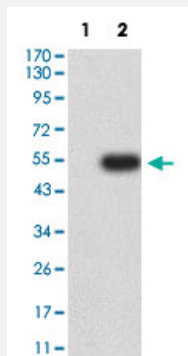


# SPN monoclonal antibody, clone 1H8B10

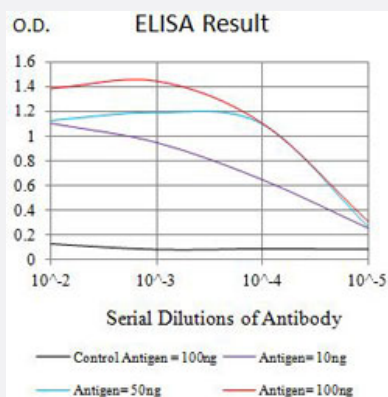
Catalog # MAB21406      Size 100 ug

## Applications



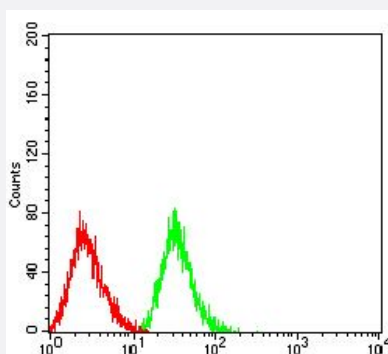
### Western Blot (Transfected lysate)

Western Blot analysis of Lane 1: HEK293 and Lane 2: SPN-hlgGfC transfected HEK293 cell lysates with SPN monoclonal antibody, clone 1H8B10 (Cat # MAB21406).



### Enzyme-linked Immunoabsorbent Assay

ELISA analysis with SPN monoclonal antibody, clone 1H8B10 (Cat # MAB21406).



### Flow Cytometry

Flow cytometric analysis of HL-60 cells with SPN monoclonal antibody, clone 1H8B10 (Cat # MAB21406) (Green). Red: Negative Control.

## Specification

Product Description	Mouse monoclonal antibody raised against partial recombinant human SPN.
Immunogen	Recombinant protein corresponding to amino acids 20-253 of human SPN.
Host	Mouse
Theoretical MW (kDa)	40.3
Reactivity	Human
Form	Liquid
Isotype	IgG1
Recommend Usage	ELISA (1:10000) Flow Cytometry (1:200-1:400) Western Blot (1:500-1:2000) The optimal working dilution should be determined by the end user.
Storage Buffer	In PBS (0.05% sodium azide).
Storage Instruction	Store at 4°C. For long term storage store at -20°C. Aliquot to avoid repeated freezing and thawing.
Note	This product contains sodium azide: a POISONOUS AND HAZARDOUS SUBSTANCE which should be handled by trained staff only.

## Applications

- Western Blot (Transfected lysate)

Western Blot analysis of Lane 1: HEK293 and Lane 2: SPN-hlgGfc transfected HEK293 cell lysates with SPN monoclonal antibody, clone 1H8B10 (Cat # MAB21406).

- Enzyme-linked Immunoabsorbent Assay

ELISA analysis with SPN monoclonal antibody, clone 1H8B10 (Cat # MAB21406).

- Flow Cytometry

Flow cytometric analysis of HL-60 cells with SPN monoclonal antibody, clone 1H8B10 (Cat # MAB21406) (Green). Red: Negative Control.

## Gene Info — SPN

Entrez GeneID [6693](#)

Protein Accession# [P16150](#)

Gene Name	SPN
Gene Alias	CD43, GPL115, LSN
Gene Description	sialophorin
Omim ID	<a href="#">182160</a>
Gene Ontology	<a href="#">Hyperlink</a>
Gene Summary	Sialophorin (leukosialin) is a major sialoglycoprotein on the surface of human T lymphocytes, monocytes, granulocytes, and some B lymphocytes, which appears to be important for immune function and may be part of a physiologic ligand-receptor complex involved in T-cell activation.[supplied by OMIM]
Other Designations	leukosialin sialophorin (gpL115, leukosialin, CD43) sialophorin (leukosialin, CD43)

## Pathway

- [Cell adhesion molecules \(CAMs\)](#)

## Disease

- [Kidney Failure](#)