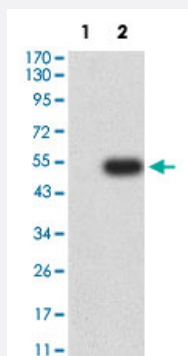


# LTBR monoclonal antibody, clone 1D1C5C8

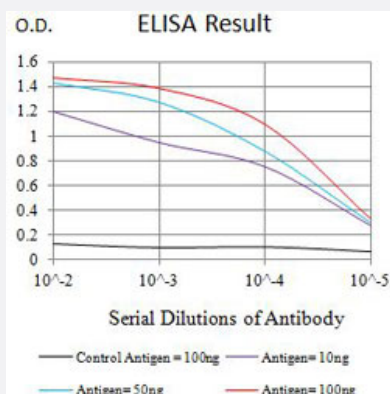
Catalog # MAB21393      Size 100 ug

## Applications



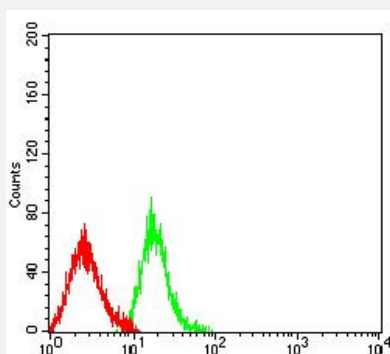
### Western Blot (Transfected lysate)

Western Blot analysis of Lane 1: HEK293 and Lane 2: LTBR-hlgGfC transfected HEK293 cell lysates with LTBR monoclonal antibody, clone 1D1C5C8 (Cat # MAB21393).



### Enzyme-linked Immunoabsorbent Assay

ELISA analysis with LTBR monoclonal antibody, clone 1D1C5C8 (Cat # MAB21393).



### Flow Cytometry

Flow cytometric analysis of HL-60 cells with LTBR monoclonal antibody, clone 1D1C5C8 (Cat # MAB21393) (Green). Red: Negative Control.

## Specification

Product Description	Mouse monoclonal antibody raised against partial recombinant human LTBR.
Immunogen	Recombinant protein corresponding to amino acids 31-227 of human LTBR.
Host	Mouse
Theoretical MW (kDa)	46.7
Reactivity	Human
Form	Liquid
Isotype	IgG2a
Recommend Usage	ELISA (1:10000) Flow Cytometry (1:200-1:400) Western Blot (1:500-1:2000) The optimal working dilution should be determined by the end user.
Storage Buffer	In PBS (0.05% sodium azide).
Storage Instruction	Store at 4°C. For long term storage store at -20°C. Aliquot to avoid repeated freezing and thawing.
Note	This product contains sodium azide: a POISONOUS AND HAZARDOUS SUBSTANCE which should be handled by trained staff only.

## Applications

- Western Blot (Transfected lysate)

Western Blot analysis of Lane 1: HEK293 and Lane 2: LTBR-hlgGfc transfected HEK293 cell lysates with LTBR monoclonal antibody, clone 1D1C5C8 (Cat # MAB21393).

- Enzyme-linked Immunoabsorbent Assay

ELISA analysis with LTBR monoclonal antibody, clone 1D1C5C8 (Cat # MAB21393).

- Flow Cytometry

Flow cytometric analysis of HL-60 cells with LTBR monoclonal antibody, clone 1D1C5C8 (Cat # MAB21393) (Green). Red: Negative Control.

## Gene Info — LTBR

Entrez GeneID [4055](#)

Protein Accession# [P36941](#)

Gene Name	LTBR
Gene Alias	D12S370, LT-BETA-R, TNF-R-III, TNFCR, TNFR-RP, TNFR2-RP, TNFRSF3
Gene Description	lymphotoxin beta receptor (TNFR superfamily, member 3)
Omim ID	<a href="#">600979</a>
Gene Ontology	<a href="#">Hyperlink</a>
Gene Summary	<p>The protein encoded by this gene is a member of the tumor necrosis factor (TNF) family of receptors. It is expressed on the surface of most cell types, including cells of epithelial and myeloid lineages, but not on T and B lymphocytes. The protein specifically binds the lymphotoxin membrane form (a complex of lymphotoxin-alpha and lymphotoxin-beta). The encoded protein and its ligand play a role in the development and organization of lymphoid tissue and transformed cells. Activation of the encoded protein can trigger apoptosis. [provided by RefSeq]</p>
Other Designations	TNFR superfamily, member 3 lymphotoxin B receptor lymphotoxin beta receptor tumor necrosis factor C receptor tumor necrosis factor receptor superfamily, member 3

## Pathway

- [Cytokine-cytokine receptor interaction](#)

## Disease

- [Birth Weight](#)
- [Genetic Predisposition to Disease](#)
- [Glioblastoma](#)
- [Glioma](#)
- [Hematologic Diseases](#)
- [Leukemia](#)
- [Meningeal Neoplasms](#)
- [Meningioma](#)
- [Multiple Myeloma](#)
- [Occupational Diseases](#)