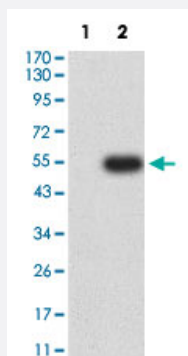


# BTN1A1 monoclonal antibody, clone 5B12B9

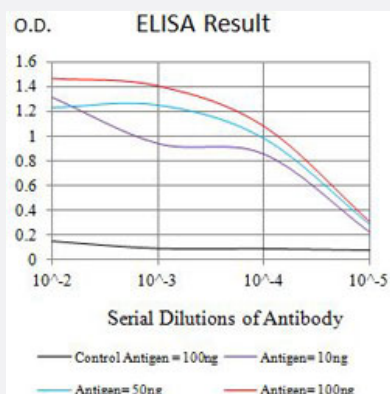
Catalog # MAB21351      Size 100 ug

## Applications



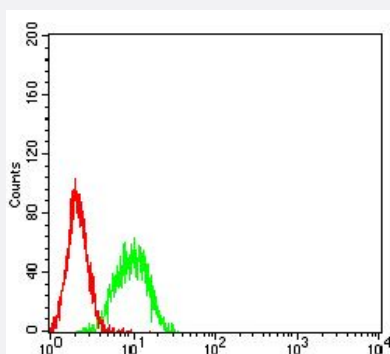
### Western Blot (Transfected lysate)

Western Blot analysis of Lane 1: HEK293 and Lane 2: BTN1A1-hlgGfc transfected HEK293 cell lysates with BTN1A1 monoclonal antibody, clone 5B12B9 (Cat # MAB21351).



### Enzyme-linked Immunoabsorbent Assay

ELISA analysis with BTN1A1 monoclonal antibody, clone 5B12B9 (Cat # MAB21351).



### Flow Cytometry

Flow cytometric analysis of K562 cells with BTN1A1 monoclonal antibody, clone 5B12B9 (Cat # MAB21351) (Green). Red: Negative Control.

## Specification

Product Description	Mouse monoclonal antibody raised against partial recombinant human BTN1A1.
Immunogen	Recombinant protein corresponding to amino acids 27-242 of human BTN1A1.
Host	Mouse
Theoretical MW (kDa)	58.9
Reactivity	Human
Form	Liquid
Isotype	IgG2b
Recommend Usage	ELISA (1:10000) Flow Cytometry (1:200-1:400) Western Blot (1:500-1:2000) The optimal working dilution should be determined by the end user.
Storage Buffer	In PBS (0.05% sodium azide).
Storage Instruction	Store at 4°C. For long term storage store at -20°C. Aliquot to avoid repeated freezing and thawing.
Note	This product contains sodium azide: a POISONOUS AND HAZARDOUS SUBSTANCE which should be handled by trained staff only.

## Applications

- Western Blot (Transfected lysate)

Western Blot analysis of Lane 1: HEK293 and Lane 2: BTN1A1-hlgGfc transfected HEK293 cell lysates with BTN1A1 monoclonal antibody, clone 5B12B9 (Cat # MAB21351).

- Enzyme-linked Immunoabsorbent Assay

ELISA analysis with BTN1A1 monoclonal antibody, clone 5B12B9 (Cat # MAB21351).

- Flow Cytometry

Flow cytometric analysis of K562 cells with BTN1A1 monoclonal antibody, clone 5B12B9 (Cat # MAB21351) (Green). Red: Negative Control.

## Gene Info — BTN1A1

Entrez GeneID [696](#)

Protein Accession# [Q13410](#)

Gene Name	BTN1A1
Gene Alias	BT, BTN
Gene Description	butyrophilin, subfamily 1, member A1
Omim ID	<a href="#">601610</a>
Gene Ontology	<a href="#">Hyperlink</a>
Gene Summary	Butyrophilin is the major protein associated with fat droplets in the milk. It is a member of the immunoglobulin superfamily. It may have a cell surface receptor function. The human butyrophilin gene is localized in the major histocompatibility complex (MHC) class I region of 6p and may have arisen relatively recently in evolution by the shuffling of exons between 2 ancestral gene families [provided by RefSeq]
Other Designations	OTTHUMP00000017981 bK14H9.2 (butyrophilin, subfamily 1, member A1)