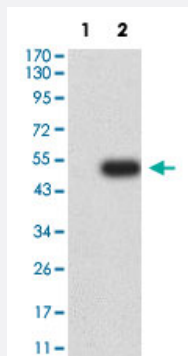


# CD96 monoclonal antibody, clone 5E6C12

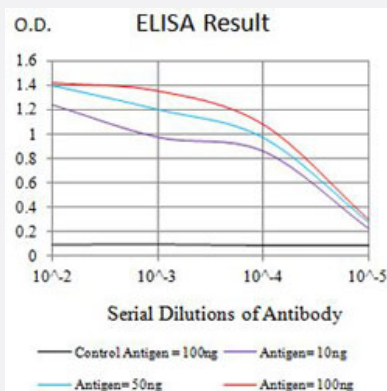
Catalog # MAB21334      Size 100 ug

## Applications



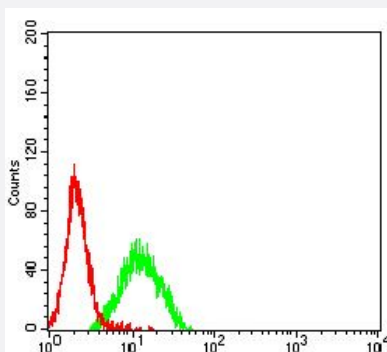
### Western Blot (Transfected lysate)

Western Blot analysis of Lane 1: HEK293 and Lane 2: CD96-hlgGfC transfected HEK293 cell lysates with CD96 monoclonal antibody, clone 5E6C12 (Cat # MAB21334).



### Enzyme-linked Immunoabsorbent Assay

ELISA analysis with CD96 monoclonal antibody, clone 5E6C12 (Cat # MAB21334).



### Flow Cytometry

Flow cytometric analysis of K562 cells with CD96 monoclonal antibody, clone 5E6C12 (Cat # MAB21334) (Green). Red: Negative Control.

## Specification

Product Description	Mouse monoclonal antibody raised against partial recombinant human CD96.
Immunogen	Recombinant protein corresponding to amino acids 321-519 of human CD96.
Host	Mouse
Theoretical MW (kDa)	65.6
Reactivity	Human
Form	Liquid
Isotype	IgG2b
Recommend Usage	ELISA (1:10000) Flow Cytometry (1:200-1:400) Western Blot (1:500-1:2000) The optimal working dilution should be determined by the end user.
Storage Buffer	In PBS (0.05% sodium azide).
Storage Instruction	Store at 4°C. For long term storage store at -20°C. Aliquot to avoid repeated freezing and thawing.
Note	This product contains sodium azide: a POISONOUS AND HAZARDOUS SUBSTANCE which should be handled by trained staff only.

## Applications

- Western Blot (Transfected lysate)

Western Blot analysis of Lane 1: HEK293 and Lane 2: CD96-hlgGfc transfected HEK293 cell lysates with CD96 monoclonal antibody, clone 5E6C12 (Cat # MAB21334).

- Enzyme-linked Immunoabsorbent Assay

ELISA analysis with CD96 monoclonal antibody, clone 5E6C12 (Cat # MAB21334).

- Flow Cytometry

Flow cytometric analysis of K562 cells with CD96 monoclonal antibody, clone 5E6C12 (Cat # MAB21334) (Green). Red: Negative Control.

## Gene Info — CD96

Entrez GeneID [10225](#)

Protein Accession# [P40200](#)

Gene Name	CD96
Gene Alias	DKFZp667E2122, MGC22596, TACTILE
Gene Description	CD96 molecule
Omim ID	<a href="#">211750</a> <a href="#">605039</a> <a href="#">606037</a>
Gene Ontology	<a href="#">Hyperlink</a>
Gene Summary	The protein encoded by this gene belongs to the immunoglobulin superfamily. It is a type I membrane protein. The protein may play a role in the adhesive interactions of activated T and NK cells during the late phase of the immune response. It may also function in antigen presentation. Alternative splicing occurs at this locus and two transcript variants encoding distinct isoforms have been identified. [provided by RefSeq]
Other Designations	CD96 antigen T cell activation, increased late expression T-cell surface protein tactile

## Disease

- [Abnormalities](#)
- [Craniofacial Abnormalities](#)
- [Syndrome](#)
- [Translocation](#)