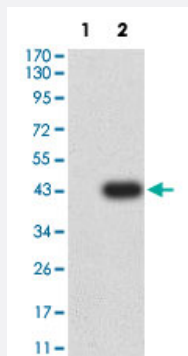


CEACAM5 monoclonal antibody, clone 3B9C9

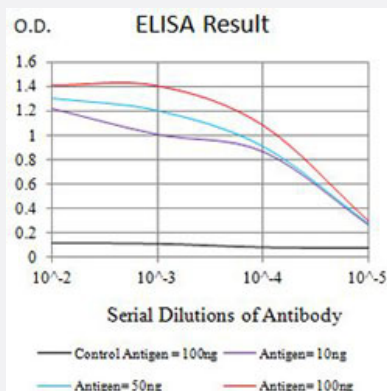
Catalog # MAB21329 Size 100 ug

Applications



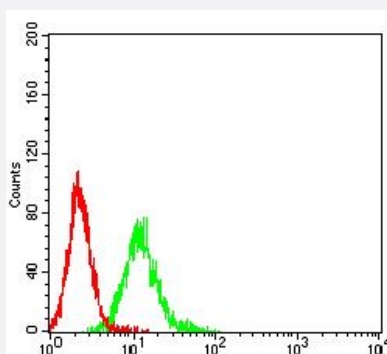
Western Blot (Transfected lysate)

Western Blot analysis of Lane 1: HEK293 and Lane 2: CEACAM5-hlgGfC transfected HEK293 cell lysates with CEACAM5 monoclonal antibody, clone 3B9C9 (Cat # MAB21329).



Enzyme-linked Immunoabsorbent Assay

ELISA analysis with CEACAM5 monoclonal antibody, clone 3B9C9 (Cat # MAB21329).



Flow Cytometry

Flow cytometric analysis of K562 cells with CEACAM5 monoclonal antibody, clone 3B9C9 (Cat # MAB21329) (Green). Red: Negative Control.

Specification

Product Description	Mouse monoclonal antibody raised against partial recombinant human CEACAM5.
Immunogen	Recombinant protein corresponding to amino acids 35-165 of human CEACAM5.
Host	Mouse
Theoretical MW (kDa)	76.8
Reactivity	Human
Form	Liquid
Isotype	IgG2a
Recommend Usage	ELISA (1:10000) Flow Cytometry (1:200-1:400) Western Blot (1:500-1:2000) The optimal working dilution should be determined by the end user.
Storage Buffer	In PBS (0.05% sodium azide).
Storage Instruction	Store at 4°C. For long term storage store at -20°C. Aliquot to avoid repeated freezing and thawing.
Note	This product contains sodium azide: a POISONOUS AND HAZARDOUS SUBSTANCE which should be handled by trained staff only.

Applications

- Western Blot (Transfected lysate)

Western Blot analysis of Lane 1: HEK293 and Lane 2: CEACAM5-hlgGfC transfected HEK293 cell lysates with CEACAM5 monoclonal antibody, clone 3B9C9 (Cat # MAB21329).

- Enzyme-linked Immunoabsorbent Assay

ELISA analysis with CEACAM5 monoclonal antibody, clone 3B9C9 (Cat # MAB21329).

- Flow Cytometry

Flow cytometric analysis of K562 cells with CEACAM5 monoclonal antibody, clone 3B9C9 (Cat # MAB21329) (Green). Red: Negative Control.

Gene Info — CEACAM5

Entrez GeneID [1048](#)

Protein Accession# [P06731](#)

Gene Name	CEACAM5
Gene Alias	CD66e, CEA, DKFZp781M2392
Gene Description	carcinoembryonic antigen-related cell adhesion molecule 5
Omim ID	114890
Gene Ontology	Hyperlink
Other Designations	-