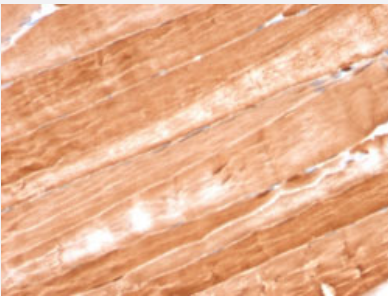


# MB monoclonal antibody, clone MB/2105

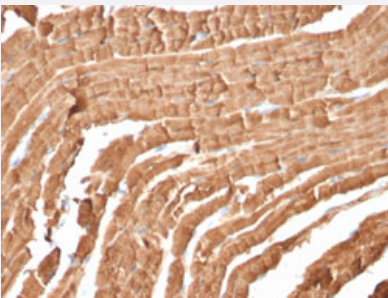
Catalog # MAB21302      Size 100 ug

## Applications



### Immunohistochemistry (Formalin/PFA-fixed paraffin-embedded sections)

Immunohistochemical staining of rat skeletal muscle.



### Immunohistochemistry (Formalin/PFA-fixed paraffin-embedded sections)

Immunohistochemical staining of mouse heart.

## Specification

<b>Product Description</b>	Mouse monoclonal antibody raised against full length recombinant human MB.
<b>Immunogen</b>	Recombinant protein corresponding to full-length human MB.
<b>Host</b>	Mouse
<b>Reactivity</b>	Human, Mouse, Rat
<b>Form</b>	Liquid
<b>Purification</b>	Protein A/G purification
<b>Isotype</b>	IgG2b, kappa

<b>Recommend Usage</b>	Immunohistochemistry (Formalin/PFA-fixed paraffin-embedded sections) (1-2 ug/mL) The optimal working dilution should be determined by the end user.
<b>Storage Buffer</b>	In 1 mg/mL PBS.
<b>Storage Instruction</b>	Store at -20 to -80°C. Aliquot to avoid repeated freezing and thawing.

## Applications

- Immunohistochemistry (Formalin/PFA-fixed paraffin-embedded sections)  
Immunohistochemical staining of rat skeletal muscle.
- Immunohistochemistry (Formalin/PFA-fixed paraffin-embedded sections)  
Immunohistochemical staining of mouse heart.

## Gene Info — MB

<b>Entrez GeneID</b>	<a href="#">4151</a>
<b>Protein Accession#</b>	<a href="#">P02144</a>
<b>Gene Name</b>	MB
<b>Gene Alias</b>	MGC13548, PVALB
<b>Gene Description</b>	myoglobin
<b>Omim ID</b>	<a href="#">160000</a>
<b>Gene Ontology</b>	<a href="#">Hyperlink</a>
<b>Gene Summary</b>	This gene encodes a member of the globin superfamily and is expressed in skeletal and cardiac muscles. The encoded protein is a haemoprotein contributing to intracellular oxygen storage and transcellular facilitated diffusion of oxygen. At least three alternatively spliced transcript variants encoding the same protein have been reported. [provided by RefSeq]
<b>Other Designations</b>	-