

MB monoclonal antibody, clone MB/2105

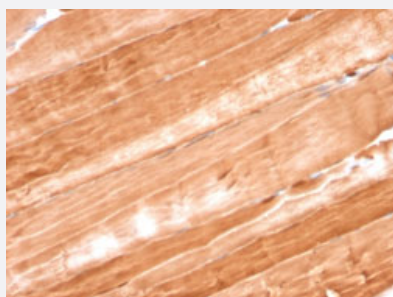
Catalog # MAB21287 Size 100 ug

Applications



Immunohistochemistry (Formalin/PFA-fixed paraffin-embedded sections)

Immunohistochemical staining of mouse heart.



Immunohistochemistry (Formalin/PFA-fixed paraffin-embedded sections)

Immunohistochemical staining of rat skeletal muscle.

Specification

Product Description	Mouse monoclonal antibody raised against full length recombinant human MB.
Immunogen	Recombinant protein corresponding to full-length human MB.
Host	Mouse
Reactivity	Human, Mouse, Rat
Form	Liquid
Purification	Protein A/G purification
Isotype	IgG2b, kappa

Recommend Usage	Immunohistochemistry (Formalin/PFA-fixed paraffin-embedded sections) (1-2 ug/mL) The optimal working dilution should be determined by the end user.
Storage Buffer	In 10 mM PBS (0.05% BSA and 0.05% azide).
Storage Instruction	Store at 2 to 8°C.
Note	This product contains sodium azide: a POISONOUS AND HAZARDOUS SUBSTANCE which should be handled by trained staff only.

Applications

- Immunohistochemistry (Formalin/PFA-fixed paraffin-embedded sections)
Immunohistochemical staining of mouse heart.
- Immunohistochemistry (Formalin/PFA-fixed paraffin-embedded sections)
Immunohistochemical staining of rat skeletal muscle.

Gene Info — MB

Entrez GeneID	4151
Protein Accession#	P02144
Gene Name	MB
Gene Alias	MGC13548, PVALB
Gene Description	myoglobin
Omim ID	160000
Gene Ontology	Hyperlink
Gene Summary	This gene encodes a member of the globin superfamily and is expressed in skeletal and cardiac muscles. The encoded protein is a haemoprotein contributing to intracellular oxygen storage and transcellular facilitated diffusion of oxygen. At least three alternatively spliced transcript variants encoding the same protein have been reported. [provided by RefSeq]
Other Designations	-