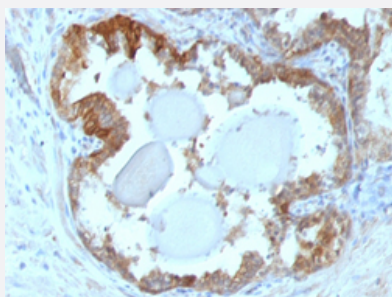


HSPB1 monoclonal antibody, clone G3.1

Catalog # MAB21236 Size 100 ug

Applications



Immunohistochemistry (Formalin/PFA-fixed paraffin-embedded sections)

Immunohistochemical staining (Formalin-fixed paraffin-embedded sections) of human prostate cancer with HSPB1 monoclonal antibody, clone G3.1 (Cat # MAB21236).

Specification

Product Description Mouse monoclonal antibody raised against human HSPB1.

Immunogen Partially purified hsp27 (earlier called 24K) protein from breast cancer MCF-7 cells.

Host Mouse

Theoretical MW (kDa) 27

Reactivity Human

Form Liquid

Purification Protein A/G purification

Isotype IgG1, kappa

Recommend Usage

- Flow Cytometry (0.5-1 ug/10⁶ cells in 0.1 mL)
- Immunofluorescence (0.5-1 ug/mL)
- Immunohistochemistry (Formalin/PFA-fixed paraffin-embedded sections) (0.25-0.5 ug/mL)
- Western Blot (0.5-1 ug/mL)
- The optimal working dilution should be determined by the end user.

Storage Buffer In 10 mM PBS (0.05% sodium azide).

Storage Instruction

Store at 4°C.

Note

This product contains sodium azide: a POISONOUS AND HAZARDOUS SUBSTANCE which should be handled by trained staff only.

Applications

- Western Blot
- Immunohistochemistry (Formalin/PFA-fixed paraffin-embedded sections)
Immunohistochemical staining (Formalin-fixed paraffin-embedded sections) of human prostate cancer with HSPB1 monoclonal antibody, clone G3.1 (Cat # MAB21236).
- Immunofluorescence
- Flow Cytometry

Gene Info — HSPB1

Entrez GeneID	3315
Protein Accession#	P04792
Gene Name	HSPB1
Gene Alias	CMT2F, DKFZp586P1322, HMN2B, HS.76067, HSP27, HSP28, Hsp25, SRP27
Gene Description	heat shock 27kDa protein 1
Omim ID	602195 606595 608634
Gene Ontology	Hyperlink
Gene Summary	The protein encoded by this gene is induced by environmental stress and developmental changes . The encoded protein is involved in stress resistance and actin organization and translocates from the cytoplasm to the nucleus upon stress induction. Defects in this gene are a cause of Charcot-Marie-Tooth disease type 2F (CMT2F) and distal hereditary motor neuropathy (dHMN). [provided by RefSeq]
Other Designations	OTTHUMP00000024846 estrogen-regulated 24 kDa protein heat shock 27kD protein 1 heat shock protein beta-1 stress-responsive protein 27

Pathway

- [MAPK signaling pathway](#)
- [VEGF signaling pathway](#)

Disease

- [Adenocarcinoma](#)
- [Carcinoma](#)
- [Charcot-Marie-Tooth Disease](#)
- [Diabetic Nephropathies](#)
- [Genetic Predisposition to Disease](#)
- [Lung Neoplasms](#)
- [Small Cell Lung Carcinoma](#)