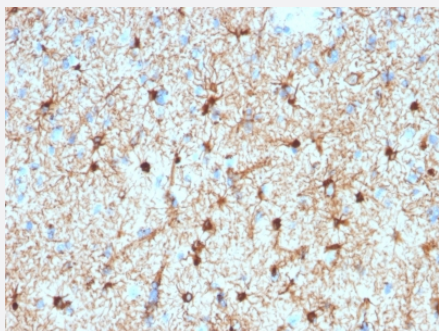


GFAP monoclonal antibody, clone GFAP/2076

Catalog # MAB21014

Size 100 ug

Applications



Immunohistochemistry (Formalin/PFA-fixed paraffin-embedded sections)

Immunohistochemical staining (Formalin-fixed paraffin-embedded sections) of human Cerebellum using GFAP monoclonal antibody, clone GFAP/2076.

Specification

Product Description Mouse monoclonal antibody raised against partial recombinant human GFAP.

Immunogen Recombinant protein corresponding to amino acids 101-200 of human GFAP.

Host Mouse

Reactivity Human

Form Liquid

Purification Protein A/G purification

Isotype IgG1

Recommend Usage Immunohistochemistry (Formalin-fixed) (1-2 ug/mL)
Western Blot (1-2 ug/mL)
The optimal working dilution should be determined by the end user.

Storage Buffer In 10 mM PBS.

Storage Instruction Store at -20 to -80°C.
Aliquot to avoid repeated freezing and thawing.

Note

This product contains sodium azide: a POISONOUS AND HAZARDOUS SUBSTANCE which should be handled by trained staff only.

Applications

- Western Blot (Cell lysate)
- Immunohistochemistry (Formalin/PFA-fixed paraffin-embedded sections)

Immunohistochemical staining (Formalin-fixed paraffin-embedded sections) of human Cerebellum using GFAP monoclonal antibody, clone GFAP/2076.

Gene Info — GFAP

Entrez GeneID [2670](#)

Protein Accession# [P14136](#)

Gene Name GFAP

Gene Alias FLJ45472

Gene Description glial fibrillary acidic protein

Omim ID [137780 203450](#)

Gene Ontology [Hyperlink](#)

Gene Summary This gene encodes one of the major intermediate filament proteins of mature astrocytes. It is used as a marker to distinguish astrocytes from other glial cells during development. Mutations in this gene cause Alexander disease, a rare disorder of astrocytes in the central nervous system. Alternative splicing results in multiple transcript variants encoding distinct isoforms. [provided by RefSeq]

Other Designations -

Disease

- [Alzheimer disease](#)
- [Cognition](#)