

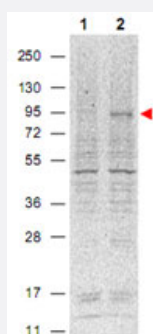
Stat5a (phospho Y694) monoclonal antibody, clone 5F6.F1

Catalog # MAB2097

Size 100 ug

Applications

Western Blot (Cell lysate)

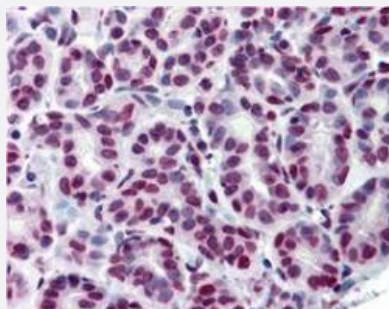


Western blot using Stat5a (phospho Y694) monoclonal antibody, clone 5F6.F1 (Cat # MAB2097) shows detection of phosphorylated Stat5a (indicated by arrowhead at ~91 KDa) in NK92 cells after 30 min treatment with 1 Ku of IL-2 (lane 2).

No reactivity is seen for non-phosphorylated Stat5a in untreated cells (lane 1). The membrane was probed with the primary antibody at a 1 : 1,000 dilution, overnight at 4°C.

For detection DyLight™800 conjugated Gt-a-Mouse IgG was used at a 1 : 20,000 dilution for 30 min at room temperature followed by visualization using a VersaDoc™ MP 4000 imaging system (Bio-Rad).

Immunohistochemistry (Formalin/PFA-fixed paraffin-embedded sections)



Immunohistochemistry using Stat5a (phospho Y694) monoclonal antibody, clone 5F6.F1 (Cat # MAB2097) shows detection of phosphorylated Stat5a pY694 in human breast tissue (40X). The antibody was used a dilution to 20 ug/mL . The image shows breast epithelium with moderate nuclear staining. Tissue was formalin fixed and paraffin embedded. No pre-treatment of sample was required. The image shows the localization of antibody as the precipitated red signal, with a hematoxylin purple nuclear counterstain.

Personal communication, Andrew Elston, Lifespan Biosciences, Seattle, WA.

Specification

Product Description

Mouse monoclonal antibody raised against synthetic phosphopeptide of Stat5a.

Immunogen

Synthetic phosphopeptide corresponding to residues surrounding Y694 of mouse Stat5a.

Host

Mouse

Reactivity	Human, Mouse, Rat
Specificity	This antibody is specific to mouse Stat5alpha protein phosphorylated at Y694.
Form	Liquid
Isotype	IgG1, kappa
Quality Control Testing	Antibody Reactive Against Synthetic Peptide.
Recommend Usage	ELISA (1:20000) Western Blot (1:500-1:2000) Immunohistochemistry (20-40 ug/mL) The optimal working dilution should be determined by the end user.
Storage Buffer	In 20 mM KH ₂ PO ₄ , 150 mM NaCl, pH 7.2 (0.01% sodium azide)
Storage Instruction	Store at 4°C. For long term storage store at -20°C. Aliquot to avoid repeated freezing and thawing.
Note	This product contains sodium azide: a POISONOUS AND HAZARDOUS SUBSTANCE which should be handled by trained staff only.

Applications

- Western Blot (Cell lysate)

Western blot using Stat5a (phospho Y694) monoclonal antibody, clone 5F6.F1 (Cat # MAB2097) shows detection of phosphorylated Stat5a (indicated by arrowhead at ~91 KDa) in NK92 cells after 30 min treatment with 1 Ku of IL-2 (lane 2). No reactivity is seen for non-phosphorylated Stat5a in untreated cells (lane 1). The membrane was probed with the primary antibody at a 1 : 1,000 dilution, overnight at 4°C. For detection DyLight™ 800 conjugated Gt-a-Mouse IgG was used at a 1 : 20,000 dilution for 30 min at room temperature followed by visualization using a VersaDoc™ MP 4000 imaging system (Bio-Rad).

- Immunohistochemistry (Formalin/PFA-fixed paraffin-embedded sections)

Immunohistochemistry using Stat5a (phospho Y694) monoclonal antibody, clone 5F6.F1 (Cat # MAB2097) shows detection of phosphorylated Stat5a pY694 in human breast tissue (40X). The antibody was used a dilution to 20 ug/mL . The image shows breast epithelium with moderate nuclear staining. Tissue was formalin fixed and paraffin embedded. No pre-treatment of sample was required. The image shows the localization of antibody as the precipitated red signal, with a hematoxylin purple nuclear counterstain.
Personal communication, Andrew Elston, Lifespan Biosciences, Seattle, WA.

- Enzyme-linked Immunoabsorbent Assay

Gene Info — Stat5a

Entrez GeneID	20850
Protein Accession#	NP_035618;P42230
Gene Name	Stat5a
Gene Alias	AA959963, STAT5
Gene Description	signal transducer and activator of transcription 5A
Gene Ontology	Hyperlink
Other Designations	OTTMUSP00000002045 OTTMUSP00000002046 STAT5a variant delta E18 mammary gland factor STAT5A

Publication Reference

- [Direct glucocorticoid receptor-Stat5 interaction in hepatocytes controls body size and maturation-related gene expression.](#)

Engblom D, Kornfeld JW, Schwake L, Tronche F, Reimann A, Beug H, Hennighausen L, Moriggl R, Schutz G.
Genes & Development 2007 May; 21(10):1157.

- [The modulation of STAT5A/GR complexes during fat cell differentiation and in mature adipocytes.](#)

Baugh JE Jr, Floyd ZE, Stephens JM.
Obesity (Silver Spring, Md.) 2007 Mar; 15(3):583.

Application: IP, WB, Mouse, 3T3-L1 cells

- [Interleukin-2 signaling via STAT5 constrains T helper 17 cell generation.](#)

Laurence A, Tato CM, Davidson TS, Kanno Y, Chen Z, Yao Z, Blank RB, Meylan F, Siegel R, Hennighausen L, Shevach EM, O'shea JJ.
Immunity 2007 Mar; 26(3):371.