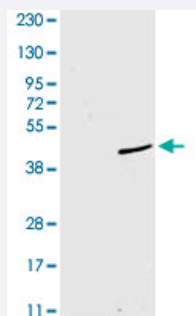


SMT3 monoclonal antibody, clone 4F2.F5.G2

Catalog # MAB2093

Size 100 ug

Applications



Western Blot (Recombinant protein)

Immunoblot of SMT3 fusion protein.

SMT3 monoclonal antibody, clone 4F2.F5.G2 (Cat # MAB2093), generated by immunization with recombinant yeast SMT3, was tested by immunoblot against a SMT3-GFP fusion protein (lane 2).

While the actual molecular weight of the fusion protein is 39 KDa, the protein migrates as a 49 KDa band (arrowhead).

No reactivity is seen for lane 1 which contains His-tagged GFP protein.

The primary antibody was used at a 1:1,000 dilution.

Specification

Product Description	Mouse monoclonal antibody raised against full length recombinant SMT3.
Immunogen	Recombinant protein corresponding to full length <i>Saccharomyces cerevisiae</i> SMT3.
Host	Mouse
Reactivity	Yeast
Form	Liquid
Isotype	IgG1, kappa
Quality Control Testing	Antibody Reactive Against Recombinant Protein.
Recommend Usage	ELISA (1:20000) Western Blot (1:2000) Immunohistochemistry (1:1000) The optimal working dilution should be determined by the end user.
Storage Buffer	In 20 mM KH ₂ PO ₄ , 150 mM NaCl, pH 7.2 (0.01% sodium azide)

Storage Instruction

Store at 4°C. For long term storage store at -20°C.
Aliquot to avoid repeated freezing and thawing.

Note

This product contains sodium azide: a POISONOUS AND HAZARDOUS SUBSTANCE which should be handled by trained staff only.

Applications

- Western Blot (Recombinant protein)

Immunoblot of SMT3 fusion protein.

SMT3 monoclonal antibody, clone 4F2.F5.G2 (Cat # MAB2093), generated by immunization with recombinant yeast SMT3, was tested by immunoblot against a SMT3-GFP fusion protein (lane 2).

While the actual molecular weight of the fusion protein is 39 KDa, the protein migrates as a 49 KDa band (arrowhead).

No reactivity is seen for lane 1 which contains His-tagged GFP protein.

The primary antibody was used at a 1:1,000 dilution.

- Immunohistochemistry

- Enzyme-linked Immunoabsorbent Assay

Gene Info — SMT3

Entrez GeneID[852122](#)**Protein Accession#**[NP_010798:Q12306](#)**Gene Name**

SMT3

Gene Alias

-

Gene Description

Smt3p

Gene Ontology[Hyperlink](#)**Gene Summary**

conjugated to lysine residues of target proteins; regulates chromatid cohesion

Other Designations

Ubiquitin-like protein of the SUMO family, conjugated to lysine residues of target proteins; regulates chromatid cohesion, chromosome segregation, APC-mediated proteolysis, DNA replication and septin ring dynamics

Publication Reference

- [SP-RING for SUMO: new functions bloom for a ubiquitin-like protein.](#)

Hochstrasser M.

Cell 2001 Oct; 107(1):5.

- [Involvement of PIAS1 in the sumoylation of tumor suppressor p53.](#)

Kahyo T, Nishida T, Yasuda H.

Molecular Cell 2001 Sep; 8(3):713.

- [SUMO, ubiquitin's mysterious cousin.](#)

Muller S, Hoege C, Pyrowolakis G, Jentsch S.

Nature Reviews. Molecular Cell Biology 2001 Mar; 2(3):202.