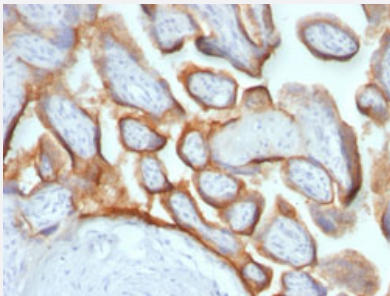


CGB monoclonal antibody, clone HCGb/54 + HCGb/459

Catalog # MAB20879

Size 100 ug

Applications



Immunohistochemistry (Formalin/PFA-fixed paraffin-embedded sections)

Immunohistochemical staining (Formalin-fixed paraffin-embedded sections) of human placenta with CGB monoclonal antibody, clone HCGb/54 + HCGb/459 (Cat # MAB20879).

Specification

Product Description	Mouse monoclonal antibody raised against human CGB.
Immunogen	Recombinant protein corresponding to human CGB.
Host	Mouse
Theoretical MW (kDa)	22
Reactivity	Human
Form	Liquid
Purification	Protein A/G purification
Isotype	IgG1, kappa
Recommend Usage	Immunohistochemistry (Formalin/PFA-fixed paraffin-embedded sections) (0.5-1 ug/mL) The optimal working dilution should be determined by the end user.
Storage Buffer	In 10 mM PBS (0.05% BSA, 0.05% sodium azide).
Storage Instruction	Store at 2 to 8°C.

Note

This product contains sodium azide: a POISONOUS AND HAZARDOUS SUBSTANCE which should be handled by trained staff only.

Applications

- Immunohistochemistry (Formalin/PFA-fixed paraffin-embedded sections)

Immunohistochemical staining (Formalin-fixed paraffin-embedded sections) of human placenta with CGB monoclonal antibody, clone HCGb/54 + HCGb/459 (Cat # MAB20879).

Gene Info — CGB

Entrez GeneID [1082](#)

Gene Name CGB

Gene Alias CGB3, hCGB

Gene Description chorionic gonadotropin, beta polypeptide

Omim ID [118860](#)

Gene Ontology [Hyperlink](#)

Gene Summary This gene is a member of the glycoprotein hormone beta chain family and encodes the beta 3 subunit of chorionic gonadotropin (CG). Glycoprotein hormones are heterodimers consisting of a common alpha subunit and an unique beta subunit which confers biological specificity. CG is produced by the trophoblastic cells of the placenta and stimulates the ovaries to synthesize the steroids that are essential for the maintenance of pregnancy. The beta subunit of CG is encoded by 6 genes which are arranged in tandem and inverted pairs on chromosome 19q13.3 and contiguous with the luteinizing hormone beta subunit gene. [provided by RefSeq]

Other Designations chorionic gonadotropin beta 3 subunit|chorionic gonadotropin beta chain|chorionic gonadotropin beta subunit

Disease

- [Abortion](#)
- [Genetic Predisposition to Disease](#)