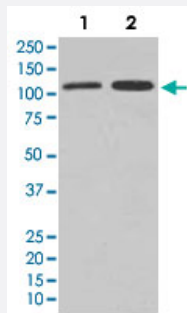


# VCL monoclonal antibody, clone AIG-22

Catalog # MAB20848      Size 100 uL

## Applications



### Western Blot

Western Blot analysis of (1) HepG2, (2) HeLa cell lysate.

## Specification

**Product Description** Rabbit monoclonal antibody raised against synthetic peptide of human VCL.

**Immunogen** A synthetic peptide corresponding to human VCL.

**Host** Rabbit

**Reactivity** Human, Mouse, Rat

**Form** Liquid

**Purification** Affinity purification

**Isotype** IgG

**Recommend Usage**

- Immunoprecipitation (1:50)
- Immunocytochemistry (1:50-200)
- Immunofluorescence (1:50-200)
- Immunohistochemistry (1:50-200)
- Western Blot (1:500-2000)
- The optimal working dilution should be determined by the end user.

**Storage Buffer** In PBS, 150 mM NaCl, pH 7.4 (50% glycerol, 0.02% sodium azide).

**Storage Instruction**

Store at -20°C for one year. After reconstitution, at 4°C for one month. It can also be aliquotted and stored frozen at -20°C for a longer time. Avoid repeated freezing and thawing.

**Note**

This product contains sodium azide: a POISONOUS AND HAZARDOUS SUBSTANCE which should be handled by trained staff only.

## Applications

- Western Blot

Western Blot analysis of (1) HepG2, (2) HeLa cell lysate.

- Immunocytochemistry

- Immunofluorescence

- Immunoprecipitation

## Gene Info — VCL

**Entrez GeneID**[7414](#)**Protein Accession#**[P18206](#)**Gene Name**

VCL

**Gene Alias**

CMD1W, MVCL

**Gene Description**

vinculin

**Omim ID**[193065 611407](#)**Gene Ontology**[Hyperlink](#)**Gene Summary**

Vinculin is a cytoskeletal protein associated with cell-cell and cell-matrix junctions, where it is thought to function as one of several interacting proteins involved in anchoring F-actin to the membrane. Defects in VCL are the cause of cardiomyopathy dilated type 1W. Dilated cardiomyopathy is a disorder characterized by ventricular dilation and impaired systolic function, resulting in congestive heart failure and arrhythmia. Multiple alternatively spliced transcript variants have been found for this gene, but the biological validity of some variants has not been determined. [provided by RefSeq]

**Other Designations**

OTTHUMP00000019861|OTTHUMP00000043885|metavinculin

## Pathway

- [Adherens junction](#)
- [Focal adhesion](#)
- [Leukocyte transendothelial migration](#)
- [Regulation of actin cytoskeleton](#)

## Disease

- [Alzheimer Disease](#)
- [Cardiomyopathy](#)
- [Cardiovascular Diseases](#)
- [Cleft Lip](#)
- [Cleft Palate](#)
- [Diabetes Mellitus](#)
- [Edema](#)
- [Genetic Predisposition to Disease](#)