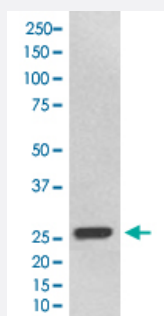


UCHL3 monoclonal antibody, clone BGE-21

Catalog # MAB20831 Size 100 uL

Applications



Western Blot (Cell lysate)

Western Blot analysis of 293T cell lysate with UCHL3 monoclonal antibody, clone BGE-21 (Cat # MAB20831).

Specification

Product Description	Rabbit monoclonal antibody raised against synthetic peptide of human UCHL3.
Immunogen	A synthetic peptide corresponding to human UCHL3.
Host	Rabbit
Theoretical MW (kDa)	26.183
Reactivity	Human
Form	Liquid
Purification	Affinity purification
Isotype	IgG
Recommend Usage	Western Blot (1:1000-1:2000) The optimal working dilution should be determined by the end user.
Storage Buffer	In PBS, 150 mM NaCl, pH 7.4 (50% glycerol, 0.02% sodium azide).
Storage Instruction	Store at -20°C for one year. After reconstitution, at 4°C for one month. It can also be aliquotted and stored frozen at -20°C for a longer time. Avoid repeated freezing and thawing.

Note

This product contains sodium azide: a POISONOUS AND HAZARDOUS SUBSTANCE which should be handled by trained staff only.

Applications

- Western Blot (Cell lysate)

Western Blot analysis of 293T cell lysate with UCHL3 monoclonal antibody, clone BGE-21 (Cat # MAB20831).

Gene Info — UCHL3

Entrez GeneID	7347
Protein Accession#	P15374
Gene Name	UCHL3
Gene Alias	UCH-L3
Gene Description	ubiquitin carboxyl-terminal esterase L3 (ubiquitin thiolesterase)
Omim ID	603090
Gene Ontology	Hyperlink
Other Designations	OTTHUMP00000018509 ubiquitin carboxyl-terminal esterase L3 ubiquitin thiolesterase